



DEPARTMENT OF THE NAVY
COMMANDER, FLEET ACTIVITIES YOKOSUKA
PSC 473 BOX 1
FPO AP 96349

5090
Ser N00/782
15 Nov 23

From: Commander, Fleet Activities Yokosuka
To: Parents and Staff

Subj: DRINKING WATER LEAD SAMPLING RESULTS AT KINNICK HIGH SCHOOL

Encl: (1) Sample Summary Results Table
(2) Floor Plan - Kinnick High School

1. This notice is to make you aware of the latest developments regarding our efforts to address elevated lead levels in drinking water that were reported on 20 April 2023 at Fleet Activities (FLEACT) Yokosuka Kinnick High School.
2. On 18 January 2023, the community was made aware of the water testing of 137 outlets at Kinnick High School. Of these, one outlet tested higher than 15 parts per billion (ppb) screening level for lead. This is the Navy's designated level for action with additional testing and corrective measures.
3. All corrective measures were completed and levels at Kinnick High School are all below the screening level of 15 ppb.
4. Specifically, the following corrective actions have been implemented after the initial findings:
 - a. All outlets and supply valves that tested above the 15 ppb were secured as the cause was investigated, resampled to confirm results, and permanent corrective action implemented.
 - b. Follow up testing results for the faucet in room 504 confirmed that the water outlet exceeded the 15 ppb screening level.
 - c. The sink in room 504 was permanently removed from service.
5. Enclosure (1) is a complete set of the test results, which includes the list of sampling locations and the purpose of the water outlet (drinking or washing). As described above, for those locations that exceeded the recommended screening level on the first test, we conducted a follow-on resampling. Enclosure (1) provides details on which outlets required corrective action and the actions taken.
6. Enclosure (2) delineates locations where initial water sampling results exceeded 15 ppb. All outlets are now below the screening level.

Subj: DRINKING WATER LEAD SAMPLING RESULTS AT KINNICK HIGH SCHOOL

7. For your information, included below are links to additional drinking water quality resources:

EPA (lead in drinking water in schools and day care centers)

<https://www.epa.gov/ground-water-and-drinking-water/3ts-reducing-lead-drinking-water>

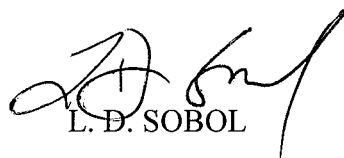
Annual water quality report for the installation:

<https://cnrj.cnmc.navy.mil/Operations-and-Management/Water-Quality-Information/Water-quality-reports/#CFAY>

8. Please be assured that my team and I will continue to monitor and test water quality at FLEACT Yokosuka Kinnick High School to ensure our drinking water complies with EPA regulations. If you have any questions or concerns regarding the LIPA Program, please contact the FLEACT Yokosuka Public Affairs Officer at: CFAYPublicAffairsOfficer@gmail.com.

9. If you have any health related questions or concerns about lead exposure, you are encouraged to contact your health care provider or if you are a TRICARE beneficiary use the Yokosuka Naval Hospital central appointment line at DSN: 315-243-5352. If unable to acquire information from previously discussed sources, please contact my staff immediately.

10. I am committed to the safety and health of all personnel and family members using our facilities and will keep you updated on this issue.



L. D. SOBOL

Copy to:

CNIC N45

NAVFAC, Director of Environmental Programs

Sample Summary Results Table

Priority Areas Lead Testing and Corrective Actions (October 2023)

FLEACT Yokosuka - Kinnick High School

Buildings: 1901, 1902, 1953, 1954, 1955, 3365

Table 1. Summary of Results

SAMPLING LOCATION DESCRIPTION					INITIAL SAMPLING RESULTS			RE-SAMPLING RESULTS		CORRECTIVE ACTIONS	POST-CORRECTIVE ACTION SAMPLING RESULTS	
					Lead Screening Level of 15 ppb			Lead Screening Level of 15 ppb			Recommended Level = 15 ppb	
CATEGORY	SAMPLE ID	Room Number	Outlet Location	Outlet Description	First Draw (ppb)	Retest required?	Date Fixture Secured? (See Note 1)	First Draw (ppb)	Follow up Flush - Collected 30 seconds after First Draw Sampling (ppb)	Description	First Draw (ppb) (See note 2)	Follow up Flush - Collected 30 seconds after First Draw Sampling (ppb)
SAMPLING DATE RESULTS DATE					3/1/2023-3/10/2023			3/25/2023	3/25/2023		N/A	
					3/16/2023			3/31/2023	3/31/2023		N/A	
DRINKING	YSK1901C033-A	Corridor 1F	NA	Cooler	Not Detected	NO	N/A	N/A	N/A	N/A	N/A	N/A
DRINKING	YSK1901C033-B	Corridor 1F	NA	Cooler	Not Detected	NO	N/A	N/A	N/A	N/A	N/A	N/A
DRINKING	YSK1901C034-A	Corridor 1F	NA	Cooler	Not Detected	NO	N/A	N/A	N/A	N/A	N/A	N/A
DRINKING	YSK1901C034-B	Corridor 1F	NA	Cooler	Not Detected	NO	N/A	N/A	N/A	N/A	N/A	N/A
DRINKING	YSK1901C051-A	Cafeteria /MultiPurposRM	115	Cooler	Not Detected	NO	N/A	N/A	N/A	N/A	N/A	N/A
DRINKING	YSK1901C051-B	Cafeteria/MultiPurposRM	115	Cooler	Not Detected	NO	N/A	N/A	N/A	N/A	N/A	N/A
DRINKING	YSK1901C063-A	Corridor 2F (Near girls Toilet)	NA	Cooler	Not Detected	NO	N/A	N/A	N/A	N/A	N/A	N/A
DRINKING	YSK1901C063-B	Corridor 2F (Near girls Toilet)	NA	Cooler	Not Detected	NO	N/A	N/A	N/A	N/A	N/A	N/A
DRINKING	YSK1901C064-A	Corridor 2F (Near Mech room)	NA	Cooler	Not Detected	NO	N/A	N/A	N/A	N/A	N/A	N/A
DRINKING	YSK1901C064-B	Corridor 2F (Near Mech room)	NA	Cooler	Not Detected	NO	N/A	N/A	N/A	N/A	N/A	N/A
DRINKING	YSK1901C071-A	Info Center	NA	Cooler	Not Detected	NO	N/A	N/A	N/A	N/A	N/A	N/A
DRINKING	YSK1901C071-B	Info Center	NA	Cooler	Not Detected	NO	N/A	N/A	N/A	N/A	N/A	N/A
DRINKING	YSK1901C076-A	Corridor (Near girls bathroom) (3F)	NA	Cooler	Not Detected	NO	N/A	N/A	N/A	N/A	N/A	N/A
DRINKING	YSK1901C076-B	Corridor (Near girls bathroom) (3F)	NA	Cooler	Not Detected	NO	N/A	N/A	N/A	N/A	N/A	N/A
DRINKING	YSK1901C087-A	Corridor 3F (Near room 306 entrance)	NA	Cooler	Not Detected	NO	N/A	N/A	N/A	N/A	N/A	N/A
DRINKING	YSK1901C087-B	Corridor 3F (Near room 306 entrance)	NA	Cooler	0.52	NO	N/A	N/A	N/A	N/A	N/A	N/A
DRINKING	YSK1901C131-A	Corridor	NA	Cooler	Not Detected	NO	N/A	N/A	N/A	N/A	N/A	N/A
DRINKING	YSK1901C131-B	Corridor	NA	Cooler	Not Detected	NO	N/A	N/A	N/A	N/A	N/A	N/A
DRINKING	YSK1902C001-A	Corridor	NA	Cooler	Not Detected	NO	N/A	N/A	N/A	N/A	N/A	N/A
DRINKING	YSK1902C001-B	Corridor	NA	Cooler	Not Detected	NO	N/A	N/A	N/A	N/A	N/A	N/A
DRINKING	YSK1953C025	Gymnasium	417	Cooler	Not Detected	NO	N/A	N/A	N/A	N/A	N/A	N/A
DRINKING	YSK1953C026	Gymnasium	417	Cooler	Not Detected	NO	N/A	N/A	N/A	N/A	N/A	N/A
DRINKING	YSK1954C006-A	Reception	702	Cooler	Not Detected	NO	N/A	N/A	N/A	N/A	N/A	N/A
DRINKING	YSK1954C006-B	Reception	702	Cooler	Not Detected	NO	N/A	N/A	N/A	N/A	N/A	N/A
DRINKING	YSK1955C001-A	Seating	611	Cooler	Not Detected	NO	N/A	N/A	N/A	N/A	N/A	N/A
DRINKING	YSK1955C001-B	Seating	611	Cooler	Not Detected	NO	N/A	N/A	N/A	N/A	N/A	N/A
DRINKING	YSK1955C009-A	Storage	609	Cooler	Not Detected	NO	N/A	N/A	N/A	N/A	N/A	N/A
DRINKING	YSK1955C009-B	Storage	609	Cooler	Not Detected	NO	N/A	N/A	N/A	N/A	N/A	N/A
DRINKING	YSK3365C008	Corridor	202	Cooler	Not Detected	NO	N/A	N/A	N/A	N/A	N/A	N/A
DRINKING	YSK3365C009	Corridor	202	Cooler	Not Detected	NO	N/A	N/A	N/A	N/A	N/A	N/A
COOKING	YSK1901F111	Food Prep	101	Faucet	4.1	NO	N/A	N/A	N/A	N/A	N/A	N/A
COOKING	YSK1901F112	Food Prep	101	Faucet	3.5	NO	N/A	N/A	N/A	N/A	N/A	N/A
COOKING	YSK1901F113	Food Prep	101	Faucet	2.3	NO	N/A	N/A	N/A	N/A	N/A	N/A
COOKING	YSK1901F114	Food Prep	101	Faucet	2.5	NO	N/A	N/A	N/A	N/A	N/A	N/A
COOKING	YSK1901F115	Food Prep	101	Faucet	2.4	NO	N/A	N/A	N/A	N/A	N/A	N/A
COOKING	YSK1901F116	Food Prep	101	Faucet	1.6	NO	N/A	N/A	N/A	N/A	N/A	N/A
COOKING	YSK1901F117	Food Prep	101	Faucet	2.5	NO	N/A	N/A	N/A	N/A	N/A	N/A
COOKING	YSK1901F118	Food Prep	101	Faucet	1.7	NO	N/A	N/A	N/A	N/A	N/A	N/A
COOKING	YSK1901F119	Food Prep	101	Faucet	0.58	NO	N/A	N/A	N/A	N/A	N/A	N/A
COOKING	YSK1901F120	Food Prep	101	Faucet	1.3	NO	N/A	N/A	N/A	N/A	N/A	N/A
WASHING	YSK3365F018	Childcare Room	209	Faucet	2.7	NO	N/A	N/A	N/A	N/A	N/A	N/A
WASHING	YSK3365F010	Male Bathroom	227	MSF	1.3	NO	N/A	N/A	N/A	N/A	N/A	N/A
WASHING	YSK3365F011	Male Bathroom	227	MSF	0.71	NO	N/A	N/A	N/A	N/A	N/A	N/A
WASHING	YSK3365F012	Male Bathroom	227	MSF	0.87	NO	N/A	N/A	N/A	N/A	N/A	N/A
WASHING	YSK3365F014	Female Bathroom	228	MSF	2.2	NO	N/A	N/A	N/A	N/A	N/A	N/A
WASHING	YSK3365F015	Female Bathroom	228	MSF	1.3	NO	N/A	N/A	N/A	N/A	N/A	N/A
WASHING	YSK3365F016	Female Bathroom	228	MSF	1.7	NO	N/A	N/A	N/A	N/A	N/A	N/A
WASHING	YSK1953F012	Toilet by Office #407	408	Faucet	0.73	NO	N/A	N/A	N/A	N/A	N/A	N/A
WASHING	YSK1953F007	Girl's Bathroom	410	Faucet	Not Detected	NO	N/A	N/A	N/A	N/A	N/A	N/A
WASHING	YSK1953F008	Girl's Bathroom	410	Faucet	0.79	NO	N/A	N/A	N/A	N/A	N/A	N/A
WASHING	YSK1953F009	Girl's Bathroom	410	Faucet	Not Detected	NO	N/A	N/A	N/A	N/A	N/A	N/A
WASHING	YSK1953F010	Girl's Bathroom	410	Faucet	0.92	NO	N/A	N/A	N/A	N/A	N/A	N/A
WASHING	YSK1953F011	Girl's Bathroom	410	Faucet	0.87	NO	N/A	N/A	N/A	N/A	N/A	N/A
WASHING	YSK1953F024	Toilet by Office	413	Faucet	0.94	NO	N/A	N/A	N/A	N/A	N/A	N/A
WASHING	YSK1953F015	Boy's Bathroom	416	Faucet	0.56	NO	N/A	N/A	N/A	N/A	N/A	N/A
WASHING	YSK1953F016	Boy's Bathroom	416	Faucet	0.54	NO	N/A	N/A	N/A	N/A	N/A	N/A
WASHING	YSK1953F017	Boy's Bathroom	416	Faucet	Not Detected	NO	N/A	N/A	N/A	N/A	N/A	N/A
WASHING	YSK1953F018	Boy's Bathroom	416	Faucet	0.76	NO	N/A	N/A	N/A	N/A	N/A	N/A
WASHING	YSK1902F007	Technical Room (Music Room)	504	Faucet	15	NO	N/A	N/A	N/A	N/A	N/A	N/A
WASHING	YSK1902F008	Technical Room (Music Room)	504	Faucet	22	YES	3/16/2023	32	1.7	Permanently removed from service	N/A	N/A
WASHING	YSK1955F010	Storage	609	Faucet	1.9	NO	N/A	N/A	N/A	N/A	N/A	N/A
WASHING	YSK1955F002	Dress RM	613	Faucet	2.5	NO	N/A	N/A	N/A	N/A	N/A	N/A

Sample Summary Results Table

Priority Areas Lead Testing and Corrective Actions (October 2023)

FLEACT Yokosuka - Kinnick High School

Buildings: 1901, 1902, 1953, 1954, 1955, 3365

SAMPLING LOCATION DESCRIPTION					INITIAL SAMPLING RESULTS			RE-SAMPLING RESULTS		CORRECTIVE ACTIONS	POST-CORRECTIVE ACTION SAMPLING RESULTS		
					Lead Screening Level of 15 ppb			Lead Screening Level of 15 ppb			Recommended Level = 15 ppb		
CATEGORY	SAMPLE ID	Room Number	Outlet Location	Outlet Description	First Draw (ppb)	Retest required?	Date Fixture Secured? (See Note 1)	First Draw (ppb)	Follow up Flush - Collected 30 seconds after First Draw Sampling (ppb)	Description	First Draw (ppb) (See note 2)	Follow up Flush - Collected 30 seconds after First Draw Sampling (ppb)	
SAMPLING DATE RESULTS DATE					3/1/2023-3/10/2023				3/25/2023	3/25/2023		N/A	
					3/16/2023				3/31/2023	3/31/2023		N/A	
WASHING	YSK1954F003	Break Room	712	Faucet	Not Detected	NO	N/A	N/A	N/A	N/A	N/A	N/A	
WASHING	YSK1954F001	Nurse Room	721	Faucet	3	NO	N/A	N/A	N/A	N/A	N/A	N/A	
WASHING	YSK3365F003	Male Bathroom	201A	MSF	1.2	NO	N/A	N/A	N/A	N/A	N/A	N/A	
WASHING	YSK3365F004	Female Bathroom	201B	MSF	0.9	NO	N/A	N/A	N/A	N/A	N/A	N/A	
WASHING	YSK1953F014	Handicap Bathroom (Boy)	411 (AKA B1)	Faucet	2.1	NO	N/A	N/A	N/A	N/A	N/A	N/A	
WASHING	YSK1955F003	Dressing	614A	Faucet	3.7	NO	N/A	N/A	N/A	N/A	N/A	N/A	
WASHING	YSK1901F007	Science Lab	107	Faucet	2.2	NO	N/A	N/A	N/A	N/A	N/A	N/A	
WASHING	YSK1901F008	Science Lab	107	Faucet	1.9	NO	N/A	N/A	N/A	N/A	N/A	N/A	
WASHING	YSK1901F028	Cent Supply Room	119	Faucet	Not Detected	NO	N/A	N/A	N/A	N/A	N/A	N/A	
WASHING	YSK1901F036	Boy's Toilet 1F near room M101	NA	Faucet	0.88	NO	N/A	N/A	N/A	N/A	N/A	N/A	
WASHING	YSK1901F037	Boy's Toilet 1F near room M101	NA	Faucet	Not Detected	NO	N/A	N/A	N/A	N/A	N/A	N/A	
WASHING	YSK1901F038	Boy's Toilet 1F near room M101	NA	Faucet	Not Detected	NO	N/A	N/A	N/A	N/A	N/A	N/A	
WASHING	YSK1901F039	Boy's Toilet 1F near room M101	NA	Faucet	1	NO	N/A	N/A	N/A	N/A	N/A	N/A	
WASHING	YSK1901F040	Girl's Toilet 1F near room 112	NA	Faucet	0.54	NO	N/A	N/A	N/A	N/A	N/A	N/A	
WASHING	YSK1901F041	Girl's Toilet 1F near room 112	NA	Faucet	0.67	NO	N/A	N/A	N/A	N/A	N/A	N/A	
WASHING	YSK1901F042	Girl's Toilet 1F near room 112	NA	Faucet	0.75	NO	N/A	N/A	N/A	N/A	N/A	N/A	
WASHING	YSK1901F043	Girl's Toilet 1F near room 112	NA	Faucet	0.7	NO	N/A	N/A	N/A	N/A	N/A	N/A	
WASHING	YSK1901F044	Girl's Toilet 1F near room 112	NA	Faucet	1.5	NO	N/A	N/A	N/A	N/A	N/A	N/A	
WASHING	YSK1901F045	Girl's Toilet by Cafeteria (1F)	NA	Faucet	Not Detected	NO	N/A	N/A	N/A	N/A	N/A	N/A	
WASHING	YSK1901F046	Girl's Toilet by Cafeteria (1F)	NA	Faucet	4.5	NO	N/A	N/A	N/A	N/A	N/A	N/A	
WASHING	YSK1901F047	Boy's Toilet by Cafeteria (1F)	NA	Faucet	3.6	NO	N/A	N/A	N/A	N/A	N/A	N/A	
WASHING	YSK1901F048	Boy's Toilet by Cafeteria (1F)	NA	Faucet	Not Detected	NO	N/A	N/A	N/A	N/A	N/A	N/A	
WASHING	YSK1901F052	Classroom (GPC)	207	Faucet	0.79	NO	N/A	N/A	N/A	N/A	N/A	N/A	
WASHING	YSK1901F053	Classroom (GPC)	207	Faucet	0.68	NO	N/A	N/A	N/A	N/A	N/A	N/A	
WASHING	YSK1901F054	Classroom (GPC)	208	Faucet	2.1	NO	N/A	N/A	N/A	N/A	N/A	N/A	
WASHING	YSK1901F055	Boys Toilet Near Room M202	NA	Faucet	0.74	NO	N/A	N/A	N/A	N/A	N/A	N/A	
WASHING	YSK1901F056	Boys Toilet Near Room M202	NA	Faucet	0.52	NO	N/A	N/A	N/A	N/A	N/A	N/A	
WASHING	YSK1901F057	Boys Toilet Near Room M202	NA	Faucet	Not Detected	NO	N/A	N/A	N/A	N/A	N/A	N/A	
WASHING	YSK1901F058	Boys Toilet Near Room M202	NA	Faucet	Not Detected	NO	N/A	N/A	N/A	N/A	N/A	N/A	
WASHING	YSK1901F059	Girls Toilet Near Room 214	NA	Faucet	0.67	NO	N/A	N/A	N/A	N/A	N/A	N/A	
WASHING	YSK1901F060	Girls Toilet Near Room 214	NA	Faucet	1.2	NO	N/A	N/A	N/A	N/A	N/A	N/A	
WASHING	YSK1901F061	Girls Toilet Near Room 214	NA	Faucet	0.66	NO	N/A	N/A	N/A	N/A	N/A	N/A	
WASHING	YSK1901F062	Girls Toilet Near Room 214	NA	Faucet	0.61	NO	N/A	N/A	N/A	N/A	N/A	N/A	
WASHING	YSK1901F066	Room 214 Toilet	214	Faucet	Not Detected	NO	N/A	N/A	N/A	N/A	N/A	N/A	
WASHING	YSK1901F067	Boy's Toilet Near Info Center (2F)	NA	Faucet	5.9	NO	N/A	N/A	N/A	N/A	N/A	N/A	
WASHING	YSK1901F068	Boy's Toilet Near Info Center (2F)	NA	Faucet	0.74	NO	N/A	N/A	N/A	N/A	N/A	N/A	
WASHING	YSK1901F069	Girl's Toilet Near Info Center (2F)	NA	Faucet	6.4	NO	N/A	N/A	N/A	N/A	N/A	N/A	
WASHING	YSK1901F070	Girl's Toilet Near Info Center (2F)	NA	Faucet	1.2	NO	N/A	N/A	N/A	N/A	N/A	N/A	
WASHING	YSK1901F072	Custodial	301	Faucet	0.57	NO	N/A	N/A	N/A	N/A	N/A	N/A	
WASHING	YSK1901F073	Toilet in Break room	319	Faucet	1.4	NO	N/A	N/A	N/A	N/A	N/A	N/A	
WASHING	YSK1901F074	Toilet in Break room	319	Faucet	0.54	NO	N/A	N/A	N/A	N/A	N/A	N/A	
WASHING	YSK1901F075	Break room	319	Faucet	1	NO	N/A	N/A	N/A	N/A	N/A	N/A	
WASHING	YSK1901F077	Boy's Toilet near M302	NA	Faucet	Not Detected	NO	N/A	N/A	N/A	N/A	N/A	N/A	
WASHING	YSK1901F078	Boy's Toilet near M302	NA	Faucet	0.67	NO	N/A	N/A	N/A	N/A	N/A	N/A	
WASHING	YSK1901F079	Boy's Toilet near M302	NA	Faucet	0.65	NO	N/A	N/A	N/A	N/A	N/A	N/A	
WASHING	YSK1901F080	Boy's Toilet near M302	NA	Faucet	0.7	NO	N/A	N/A	N/A	N/A	N/A	N/A	
WASHING	YSK1901F081	Girl's Toilet near 301	NA	Faucet	Not Detected	NO	N/A	N/A	N/A	N/A	N/A	N/A	
WASHING	YSK1901F082	Girl's Toilet near 301	NA	Faucet	Not Detected	NO	N/A	N/A	N/A	N/A	N/A	N/A	
WASHING	YSK1901F083	Girl's Toilet near 301	NA	Faucet	Not Detected	NO	N/A	N/A	N/A	N/A	N/A	N/A	
WASHING	YSK1901F084	Girl's Toilet near 301	NA	Faucet	0.57	NO	N/A	N/A	N/A	N/A	N/A	N/A	
WASHING	YSK1901F085	Girl's Toilet near 301	NA	Faucet	1.6	NO	N/A	N/A	N/A	N/A	N/A	N/A	
WASHING	YSK1901F088	Boy's Toilet near Balcony	NA	Faucet	4	NO	N/A	N/A	N/A	N/A	N/A	N/A	
WASHING	YSK1901F121	Art Room	105	Faucet	Not Detected	NO	N/A	N/A	N/A	N/A	N/A	N/A	
WASHING	YSK1901F122	Art Room	105	Faucet	0.74	NO	N/A	N/A	N/A	N/A	N/A	N/A	
WASHING	YSK1901F123	Art Room	105	Faucet	0.53	NO	N/A	N/A	N/A	N/A	N/A	N/A	
WASHING	YSK1901F124	Art Room	105	Faucet	0.73	NO	N/A	N/A	N/A	N/A	N/A	N/A	
WASHING	YSK1901F125	Teacher's room	104	Faucet	Not Detected	NO	N/A	N/A	N/A	N/A	N/A	N/A	
WASHING	YSK1901F126	Host Nation	112	Faucet	0.88	NO	N/A	N/A	N/A	N/A	N/A	N/A	
WASHING	YSK1901F126	Room112 Toilet (Teacher work room)	112	Faucet	1.9	NO	N/A	N/A	N/A	N/A	N/A	N/A	
WASHING	YSK1901F127	Girls Bathroom near Balcony (3F)	NA	Faucet	3.1	NO	N/A	N/A	N/A	N/A	N/A	N/A	
WASHING	YSK1901F129	Info Center	212	Faucet	3.6	NO	N/A	N/A	N/A	N/A	N/A	N/A	
WASHING	YSK1901F132	Girls Toilet near Room 214	NA	Faucet	1.8	NO	N/A	N/A	N/A	N/A	N/A	N/A	
WASHING	YSK1901F136	Bathroom near 122C	NA	Faucet	Not Detected	NO	N/A	N/A	N/A	N/A	N/A	N/A	

Sample Summary Results Table

Priority Areas Lead Testing and Corrective Actions (October 2023)

FLEACT Yokosuka - Kinnick High School

Buildings: 1901, 1902, 1953, 1954, 1955, 3365

SAMPLING LOCATION DESCRIPTION					INITIAL SAMPLING RESULTS			RE-SAMPLING RESULTS		CORRECTIVE ACTIONS	POST-CORRECTIVE ACTION SAMPLING RESULTS	
					Lead Screening Level of 15 ppb			Lead Screening Level of 15 ppb			Recommended Level = 15 ppb	
CATEGORY	SAMPLE ID	Room Number	Outlet Location	Outlet Description	First Draw (ppb)	Retest required?	Date Fixture Secured? (See Note 1)	First Draw (ppb)	Follow up Flush - Collected 30 seconds after First Draw Sampling (ppb)	Description	First Draw (ppb) (See note 2)	Follow up Flush - Collected 30 seconds after First Draw Sampling (ppb)
SAMPLING DATE RESULTS DATE					3/1/2023-3/10/2023			3/25/2023	3/25/2023		N/A	
					3/16/2023			3/31/2023	3/31/2023		N/A	
WASHING	YSK1901F143	Teacher Room Bathroom	104	MSF	1.4	NO	N/A	N/A	N/A	N/A	N/A	N/A
WASHING	YSK1902F003	Girl's Bathroom	NA	Faucet	11	NO	N/A	N/A	N/A	N/A	N/A	N/A
WASHING	YSK1902F004	Girl's Bathroom	NA	Faucet	3.9	NO	N/A	N/A	N/A	N/A	N/A	N/A
WASHING	YSK1902F005	Boy's Bathroom	NA	Faucet	6.6	NO	N/A	N/A	N/A	N/A	N/A	N/A
WASHING	YSK1902F006	Boy's Bathroom	NA	Faucet	2.7	NO	N/A	N/A	N/A	N/A	N/A	N/A
WASHING	YSK1954F002	Toilet by Nurse RM #721	NA	Faucet	2.9	NO	N/A	N/A	N/A	N/A	N/A	N/A
WASHING	YSK1954F004	Toilet (Men)	NA	Faucet	4.2	NO	N/A	N/A	N/A	N/A	N/A	N/A
WASHING	YSK1954F005	Toilet (Women)	NA	Faucet	0.51	NO	N/A	N/A	N/A	N/A	N/A	N/A
WASHING	YSK1955F005	Boy's Bathroom	NA	Faucet	0.69	NO	N/A	N/A	N/A	N/A	N/A	N/A
WASHING	YSK1955F006	Boy's Bathroom	NA	Faucet	0.65	NO	N/A	N/A	N/A	N/A	N/A	N/A
WASHING	YSK1955F007	Girl's Bathroom	NA	Faucet	0.6	NO	N/A	N/A	N/A	N/A	N/A	N/A
WASHING	YSK1955F008	Girl's Bathroom	NA	Faucet	Not Detected	NO	N/A	N/A	N/A	N/A	N/A	N/A

Notes:
* Affected outlets were immediately secured after receiving communication from the lab on results exceeding the recommended level of 15 ppb.

Table 2. Summary Statistics

CATEGORY	INITIAL SAMPLING RESULTS	RE-SAMPLING RESULTS				POST-CORRECTIVE ACTION RESULTS
	Lead Screening Level of 15 ppb					
	First Draw (ppb)	Water Fountain	First Draw (ppb)	Follow up Flush	First Draw (ppb)	
Total Drinking	30	0	0	0	0	
Total Drinking > 15 ppb	0	0	0	0	0	
Total Cook	10	0	0	0	0	
Total Cook> 15 ppb	0	0	0	0	0	
Total Washing	97	0	1	1	0	
Total Washing > 15 ppb	1	0	1	0	0	
Total Samples	137	0	1	1	0	
Total Samples > 15 ppb	1	0	1	0	0	

Floor Plan - Kinnick High School

Bldg. 1901, 1902, 1953, 1954, 1955, 3365

F = Faucet

C = Cooler water fountain

B = Bubbler water fountain

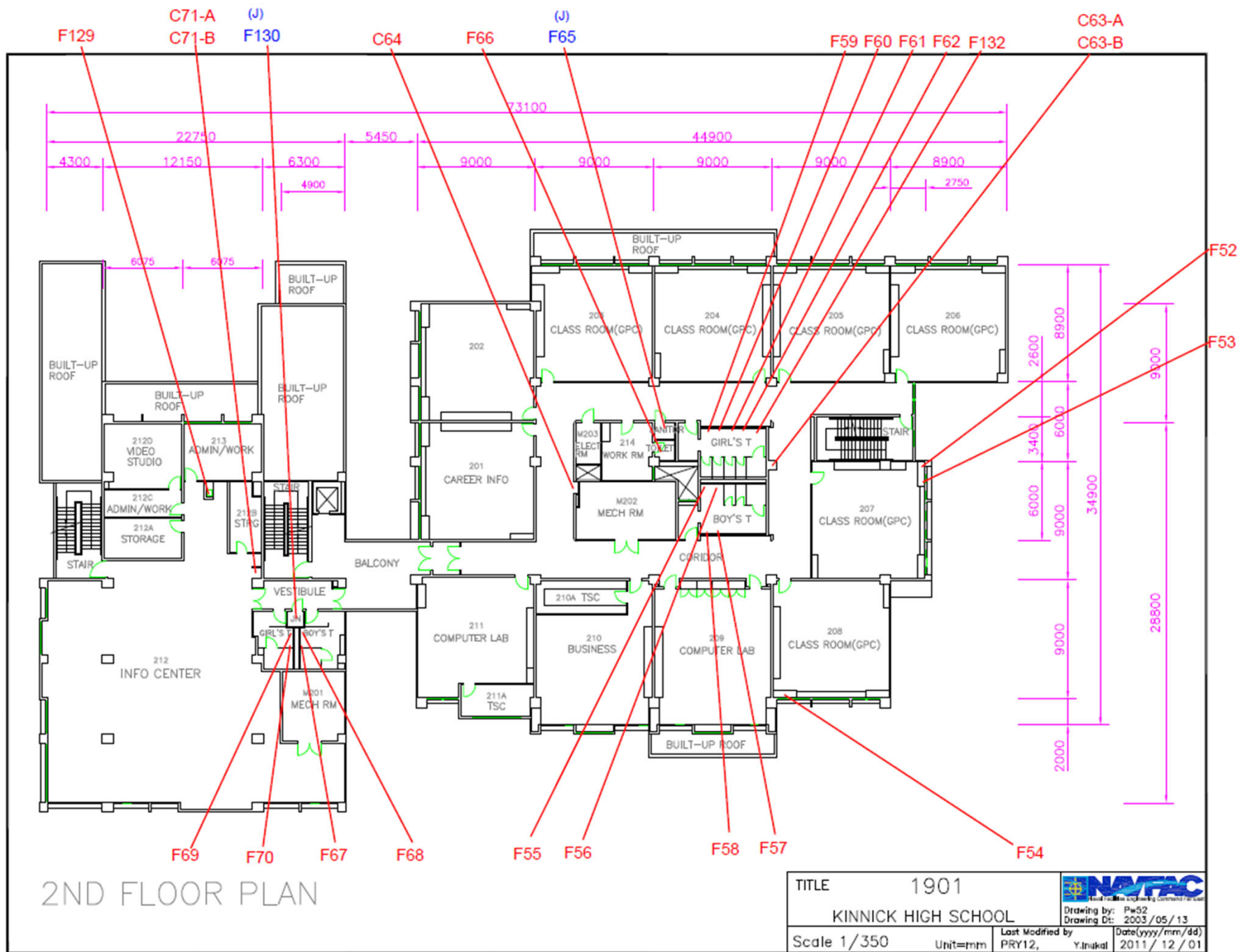
No Sampling at the following:

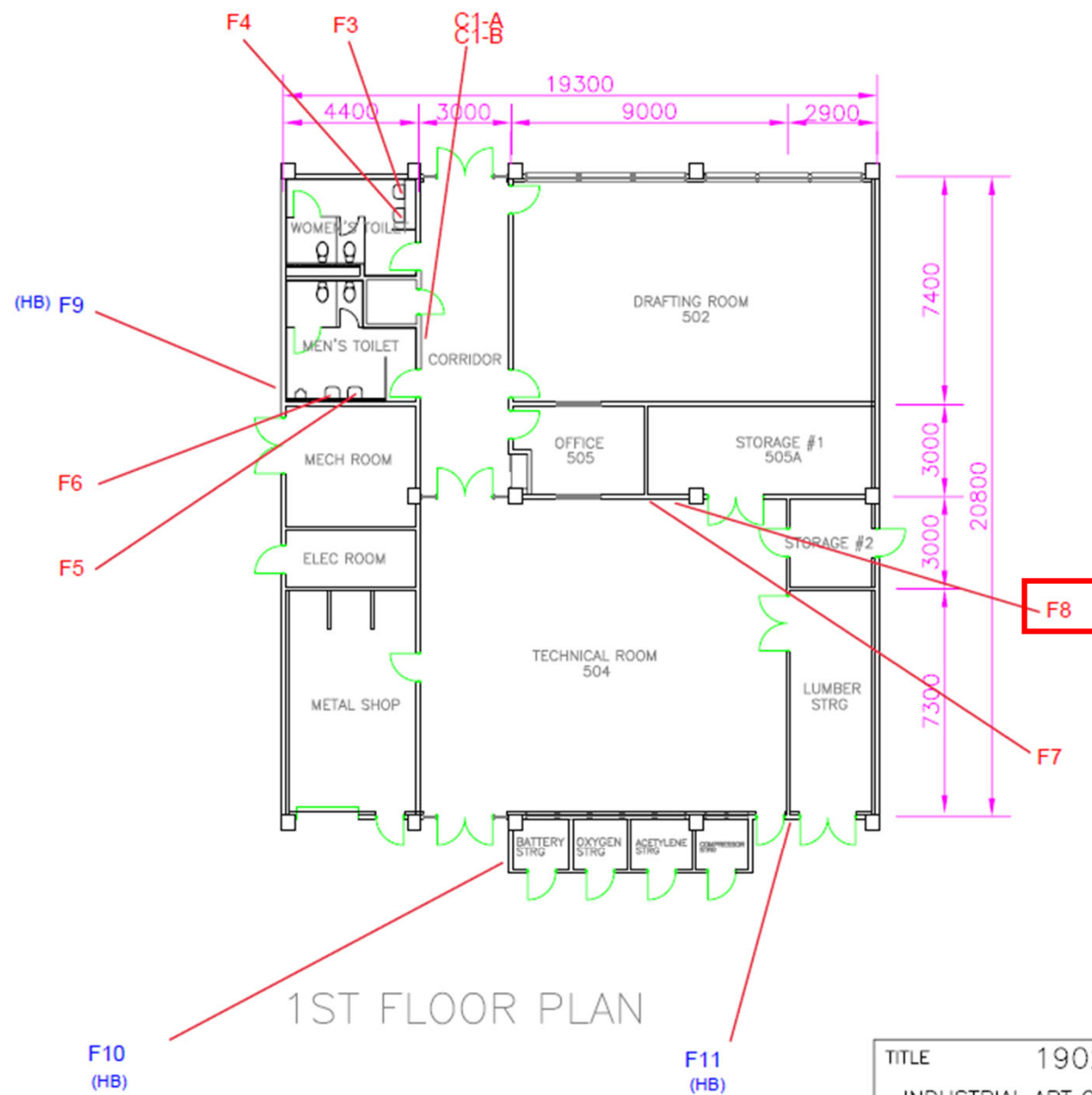
S = Shower

J = Janitor sink

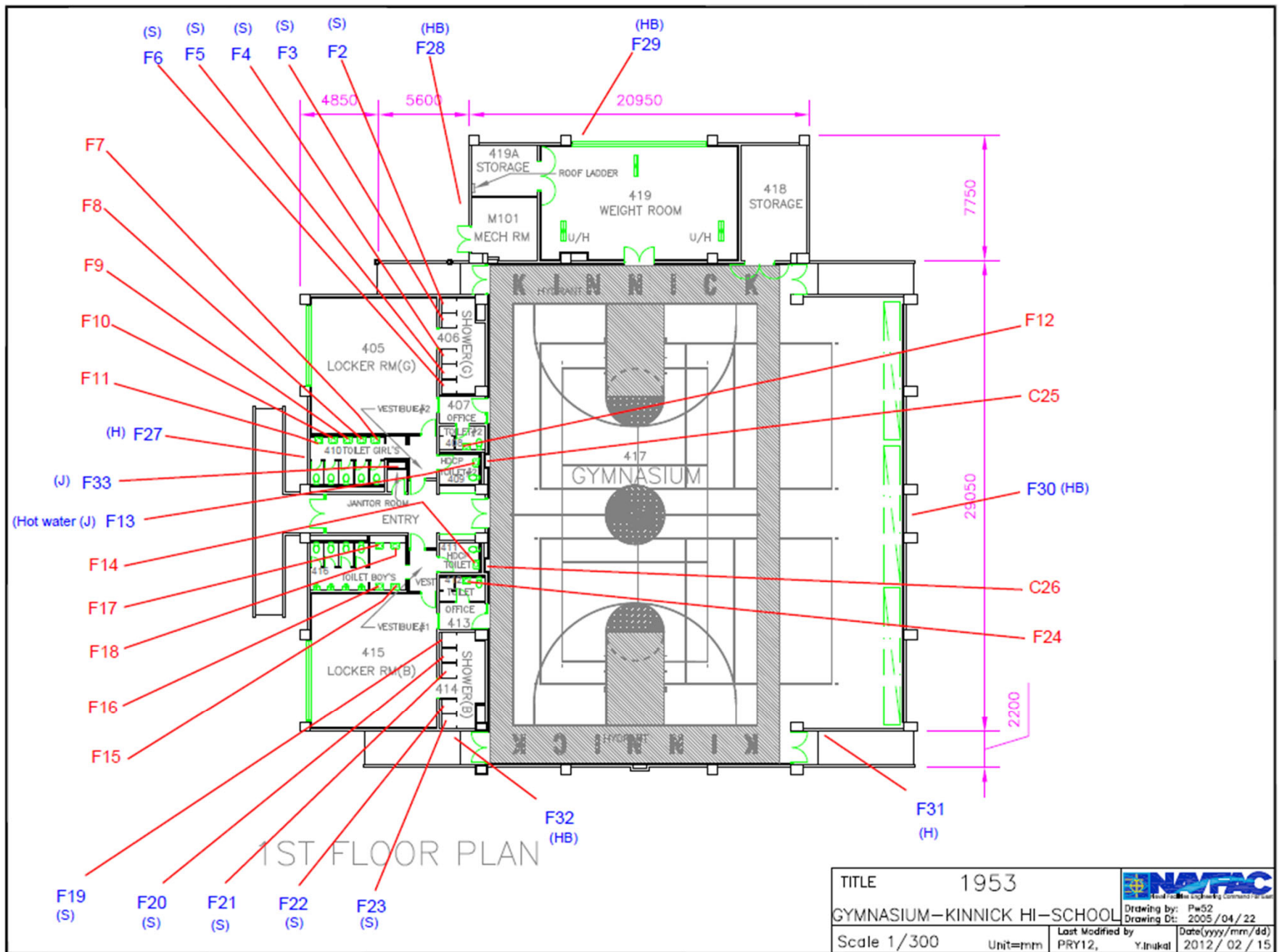
HB = Hose Bibb

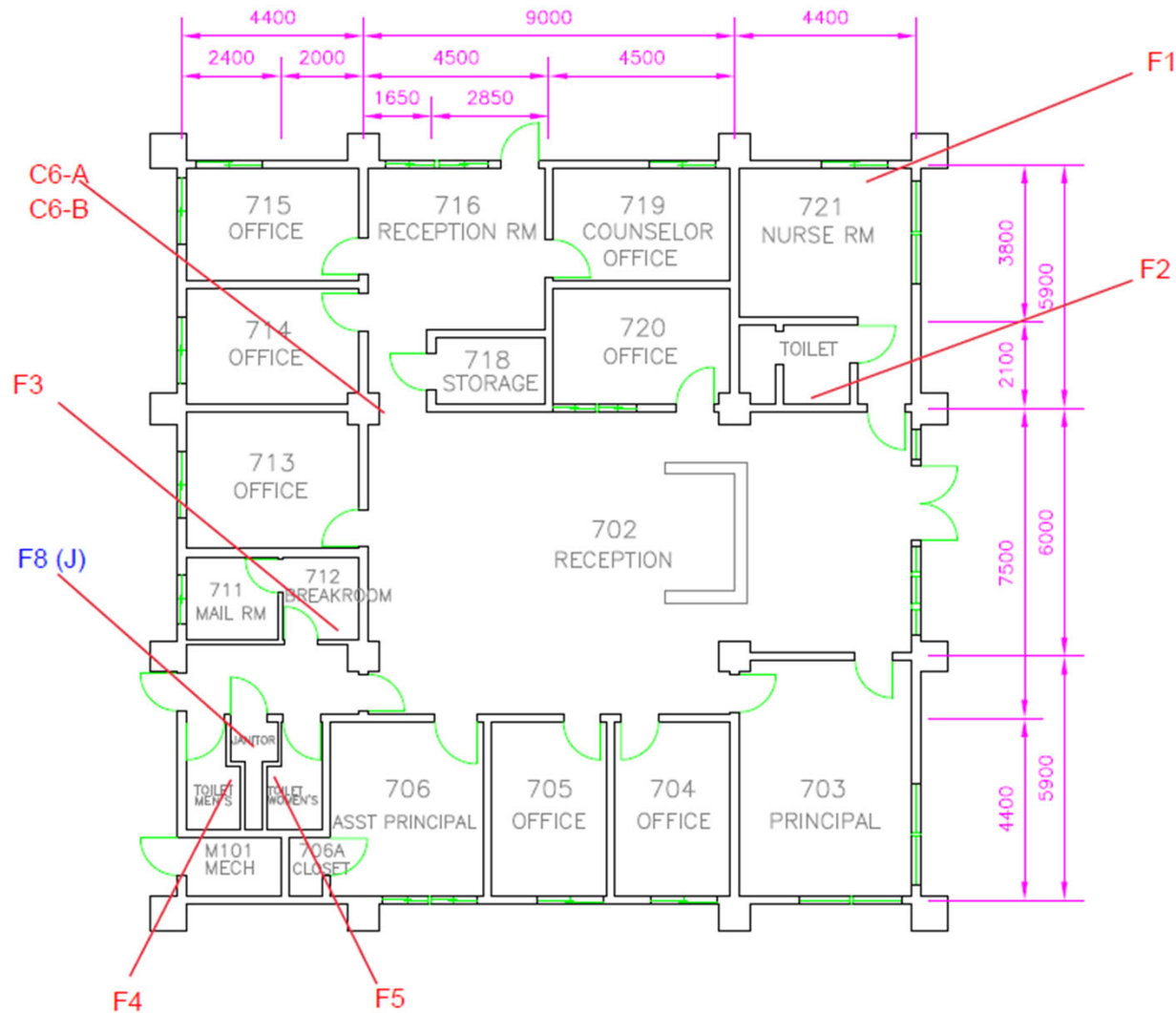
L = Lab Sink





TITLE		1902	
INDUSTRIAL ART CLASSROOM			
Scale 1/200		Unit=mm	Drawing by: Pw52 Drawing Dt: 1998/07/29 Date(yyyy/mm/dd)
Last Modified by		PRY12,	inukely 2008/02/13





1ST FLOOR PLAN

TITLE		1954	 Drawing by: Pw52 Drawing Dt: 1998/07/29	
KINNICK HIGH SCHOOL OFFICE				
Scale 1/150	Unit=mm	Last Modified by PRY12, Y.Inukal		Date/yyyy/mm/dd 2011/12/06

