



DEPARTMENT OF THE NAVY
COMMANDER, FLEET ACTIVITIES YOKOSUKA
PSC 473 BOX 1
FPO AP 96349

5090
Ser N00/266
20 Apr 23

From: Commander, Fleet Activities Yokosuka
To: Parents and Staff

Subj: DRINKING WATER LEAD SAMPLING RESULTS AT YOKOSUKA MIDDLE SCHOOL

Encl: (1) Overview of Testing Results for Lead in Drinking Water and Corrective Actions for Fleet Activities Yokosuka – Yokosuka Middle School (Buildings 4372 and 4373)
(2) Sample Summary Results Table
(3) Floor Plan - Yokosuka Middle School

1. The safety and health of children and staff at our Child Development Centers (CDCs), Schools, and Youth Centers (YCs) is a top priority. The water outlets that could potentially be used for cooking, washing, or drinking at our Schools, CDCs, and YCs on Yokosuka Main Base have been tested.

2. The results of recent water testing of 261 drinking water outlets at Yokosuka Middle School have been received. Of these, 16 outlets tested higher than Navy screening level of 15 parts per billion (ppb) for lead, which is the level requiring action to include additional testing and corrective measures. Lead in drinking water typically comes from the existing plumbing inside buildings including service lines, fittings, solder, water coolers, or water faucets. Lead is more likely to be found in drinking water when the water has not been run for an extended period of time and has been sitting in the system (e.g., overnight, weekends, etc.).

3. The lead levels were higher than the screening level at bubbler water fountains in rooms 123, 133, 218, 223, 319, 324, and 326, and faucets in rooms 123, 222, 324, 144G, 144J, 147C, 147E, 225A, and 241A. After receiving the test results, these water outlets were immediately taken out of service. Details on the corrective actions we plan to take to reduce the amount of lead in water at these fixtures are discussed in enclosure (1). Additionally, enclosure (2) and enclosure (3) indicate the location of the fixtures that had lead levels higher than the screening level.

4. If you have any questions or concerns regarding the LIPA Program, please contact the FLEACT Yokosuka Public Affairs Officer at CFAYPublicAffairsOfficer@gmail.com.

5. Here are some additional resources you may find informative:

a. Environmental Protection Agency. (lead in drinking water in schools and day care centers)

<https://www.epa.gov/ground-water-and-drinking-water/3ts-reducing-lead-drinking-water>

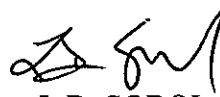
Subj: DRINKING WATER LEAD SAMPLING RESULTS AT YOKOSUKA MIDDLE SCHOOL

b. Annual water quality report for the installation.

<https://cnrj.cnmc.navy.mil/Operations-and-Management/Water-Quality-Information/Water-quality-reports/#CFAY>

6. If you have any health-related questions or concerns about lead exposure, you are encouraged to contact your health care provider or if you are a TRICARE beneficiary use the Yokosuka Naval Hospital central appointment line at DSN: 315-243-5352. If unable to acquire information from previously discussed sources, please contact my staff immediately.

7. This safety concern will continue to be monitored, water quality tested and actions taken where necessary at Yokosuka Middle School to ensure our drinking water lead levels are lower than screening levels. Fleet Activities Yokosuka is committed to the safety and health of all personnel and family members using our facilities and will keep you updated on this issue.



L.D. SOBOL

Copy to:
CNIC N45
NAVFAC, Director of Environmental Programs

Overview of Testing Results for Lead in Drinking Water and Corrective Actions for Fleet Activities Yokosuka - Yokosuka Middle School (Buildings 4372 and 4373)

The Navy is committed to maintaining safe drinking water on its installations. Yokosuka City water supplied to the Navy and the Navy's water distribution system is regularly tested and in compliance with the Safe Drinking Water Act. Because lead exposure is a particular concern for children, and lead may be added to drinking water due to its presence in pipes, fittings, solder, and fixtures inside a building, the Navy policy requires that we test the lead content of drinking water in priority areas such as Schools, youth centers (YCs), and child development centers (CDCs) every five years.

Navy environmental personnel conducted lead testing at the FLEACT Yokosuka's Middle School in accordance with Navy and Environmental Protection Agency (EPA) guidelines. Samples from various locations in the school were sent to a Navy Water Quality Oversight Council validated laboratory for analysis.

At Yokosuka Middle School, outlets used for drinking, cooking, and washing were tested. Out of 261 samples collected, 16 water outlets initially tested above the Navy screening level of 15 parts per billion (ppb) for lead in drinking water in schools and CDCs.

Four (4) outlets that exceeded the screening level of 15 ppb were bubbler water fountains in rooms 218, 223, 324, and 326, which tested at 50 ppb, 18 ppb, 17 ppb, and 18 ppb. These outlets were flushed and resampled. Follow-up confirmation sampling indicates that these outlets are below the screening level.

Two (2) bubbler water fountains that exceeded the screening level of 15 ppb in rooms 123 and 133 tested at 47 ppb and 17 ppb respectively. Based on follow-up results, elevated levels of lead appeared to be caused by the components of the bubbler water fountain. The supply valve to the fountains were closed and new lead free certified bubbler water fountains will be installed.

One (1) bubbler fountain in room 319 exceeded the screening level of 15 ppb. Due to mechanical issues follow up sampling could not be conducted. The outlet will be replaced with new lead free certified material and will remain secured until follow up results are below 15 ppb.

The nine (9) remaining outlets that exceeded 15 ppb were washing sinks. These sinks were located in rooms 123, 222, 324, 144G, 144J, 147C, 147E, 225A, and 241A. Follow-up sampling at these outlets was conducted after removing and cleaning the faucet aerators. A faucet aerator (or tap aerator) is often found at the tip of modern indoor water faucets. Without an aerator, water usually flows out of a faucet as one big stream. An aerator spreads this stream into many

little droplets, which helps save water, provides more uniform flow, and reduces splashing. However, the aerator and screen can trap debris which can accumulate lead.



After removing the faucet aerators, retesting showed that the sinks in rooms 123, 222, 324, 144G, 147C, 147E, 225A, and 241A were below the screening level. Further corrective measures (replacement with certified lead free material) will be implemented at the sink in room 144J.

The supply valves to outlets that exceeded the screening level of 15 ppb will remain secured rendering them unusable. Per EPA guidance, these outlets will remain out of service until corrective actions are completed. Testing will be conducted after implementation of corrective measures.

A copy of all test results is enclosed for your information. The test results are presented in two tables:

- Table 1 **Summary of Results** summarizes the data by category of use (e.g., drinking, cooking, and washing).
- Table 2 **Summary Statistics** summarizes all the data.

A floor plan of Yokosuka Middle School has also been included to show the locations for the fixtures that exceeded 15 ppb.

Table 1 provides a description of each sampling location using three columns; *Category*, *Sampling ID*, and *Outlet Description*. The *Category* column gives information about whether the outlet is used for drinking water (water fountain), cooking (food preparation), or washing (primarily hand-washing or brushing teeth). The *Sample ID* column is the identification used to label each sample bottle. The *Outlet Description* column contains additional information to describe the outlet sampled under each category.

The next set of columns in **Table 1** provide *Initial Sampling Results*, and for those locations that exceeded the recommended screening level of 15 ppb the *Re-sampling Results*.

EPA sampling protocol requires water to not be used for between 8 and 18 hours prior to first draw sampling. Therefore, *Initial Sampling Results* were from first draw samples collected early in the morning before the school opened and before any water was used. The *Initial Sampling Results* also indicate whether resampling is required and the date that fixtures greater than 15 ppb were secured. Outlets that exceeded 15 ppb are highlighted in yellow.

The *Re-sampling Results* includes columns for *First Draw* and flushing samples which help determine the source of lead. For washing outlets, aerators were removed and cleaned before retesting:

- If the lead concentration of the 30 second flush sample resulted in lower than 15 ppb lead, the aerators were the source of lead and the outlet can be used for drinking if the aerators are cleaned on a regular basis. The washing sinks in rooms 123, 222, 324, 144G, 147C, 147E, 225A, and 241A fit in this category.
- If the lead concentration of the resampled first draw (but not the follow up 30 second flush) was greater than 15 ppb, the fixture was the source of lead. These fixtures can be used if water is flushed for 30 seconds before first use of the day or if the fixtures are replaced and retesting confirms that the new fixtures do not leach lead. The washing sink in room 144J and the bubbler water fountains in rooms 123 and 133 fit in this category. These outlets will be replaced and follow-on testing will be conducted.
- If the lead concentration of the sample following the 30 second flush was greater than 15 ppb and greater than the lead concentration of the first draw resample, the source of lead is the plumbing upstream of the outlet. These outlets should be disconnected/removed from service unless upstream plumbing is replaced. No outlets fit into this category.

The *Corrective Actions* column describes actions that will be taken to remediate the source of lead. In the event that fixtures or upstream piping are replaced, there are columns for sampling data that confirms that the corrective actions were successful in reducing lead below 15 ppb.

To answer any questions you may have on the sampling program contact the FLEACT Yokosuka Public Affairs Officer at CFAYPublicAffairsOfficer@gmail.com. If you have any health questions or concerns, you are encouraged to contact your health care provider.

Sample Summary Results Table

Priority Areas Lead Testing and Corrective Actions (March 2023)

FLEACT Yokosuka - Yokosuka Middle School

Buildings: 4272, 4373

Table 1. Summary of Results

SAMPLING LOCATION DESCRIPTION					INITIAL SAMPLING RESULTS			RE-SAMPLING RESULTS		CORRECTIVE ACTIONS	POST-CORRECTIVE ACTION SAMPLING RESULTS	
CATEGORY	SAMPLE ID	Room Number	Outlet Location	Outlet Description	First Draw (ppb)	Retest required?	Date Fixture Secured? (See Note 1)	First Draw (ppb)	Follow up Flush - Collected 30 seconds after First Draw Sampling (ppb)		Description	First Draw (ppb) (See note 2)
SAMPLING DATE RESULTS DATE					2/17/2023 - 3/1/2023			3/25/2023	3/25/2023		mm/dd/yyyy	
					3/15/2023			3/31/2023	3/31/2023		mm/dd/yyyy	
DRINKING	YSK4372B069	147E	Classroom (wood shop)	Bubbler	3.3	NO	N/A	N/A	N/A	N/A		
DRINKING	YSK4372B077	146F	Storage	Bubbler	3.4	NO	N/A	N/A	N/A	N/A		
DRINKING	YSK4372B111	243	Classroom (Art Studio)	Bubbler	2.4	NO	N/A	N/A	N/A	N/A		
DRINKING	YSK4372B112	243	Classroom (Art Studio)	Bubbler	4.1	NO	N/A	N/A	N/A	N/A		
DRINKING	YSK4372B102	242	Home Economic Room	Bubbler	1.1	NO	N/A	N/A	N/A	N/A		
DRINKING	YSK4372B093	238	Classroom (GPC)	Bubbler	7.7	NO	N/A	N/A	N/A	N/A		
DRINKING	YSK4372B090	237	Classroom (GPC)	Bubbler	11	NO	N/A	N/A	N/A	N/A		
DRINKING	YSK4372C001-A	NA	Hallway	Cooler	Not Detected	NO	N/A	N/A	N/A	N/A		
DRINKING	YSK4372C001-B	NA	Hallway	Cooler	Not Detected	NO	N/A	N/A	N/A	N/A		
DRINKING	YSK4372C002-A	NA	Hallway	Cooler	Not Detected	NO	N/A	N/A	N/A	N/A		
DRINKING	YSK4372C002-B	NA	Hallway	Cooler	Not Detected	NO	N/A	N/A	N/A	N/A		
DRINKING	YSK4372C003-A	NA	Hallway	Cooler	Not Detected	NO	N/A	N/A	N/A	N/A		
DRINKING	YSK4372C003-B	NA	Hallway	Cooler	Not Detected	NO	N/A	N/A	N/A	N/A		
DRINKING	YSK4372C004	NA	Hallway	Cooler	0.6	NO	N/A	N/A	N/A	N/A		
DRINKING	YSK4372C005-A	NA	Hallway	Cooler	Not Detected	NO	N/A	N/A	N/A	N/A		
DRINKING	YSK4372C005-B	NA	Hallway	Cooler	Not Detected	NO	N/A	N/A	N/A	N/A		
DRINKING	YSK4372C006	NA	Hallway	Cooler	Not Detected	NO	N/A	N/A	N/A	N/A		
DRINKING	YSK4372C085	C202	Hallway	Cooler	0.65	NO	N/A	N/A	N/A	N/A		
DRINKING	YSK4372C086	C202	Hallway	Cooler	0.66	NO	N/A	N/A	N/A	N/A		
DRINKING	YSK4372C087-A	C202	Hallway	Cooler	Not Detected	NO	N/A	N/A	N/A	N/A		
DRINKING	YSK4372C087-B	C202	Hallway	Cooler	Not Detected	NO	N/A	N/A	N/A	N/A		
DRINKING	YSK4372C051-A	144A	Cafeteria	Cooler	Not Detected	NO	N/A	N/A	N/A	N/A		
DRINKING	YSK4372C051-B	144A	Cafeteria	Cooler	Not Detected	NO	N/A	N/A	N/A	N/A		
DRINKING	YSK4372C052-A	144A	Cafeteria	Cooler	Not Detected	NO	N/A	N/A	N/A	N/A		
DRINKING	YSK4372C052-B	144A	Cafeteria	Cooler	Not Detected	NO	N/A	N/A	N/A	N/A		
DRINKING	YSK4372C053	144A	Cafeteria	Cooler	Not Detected	NO	N/A	N/A	N/A	N/A		
DRINKING	YSK4372C029	143A	Gym	Cooler	Not Detected	NO	N/A	N/A	N/A	N/A		
DRINKING	YSK4372C030-A	143A	Gym	Cooler	Not Detected	NO	N/A	N/A	N/A	N/A		
DRINKING	YSK4372C030-B	143A	Gym	Cooler	Not Detected	NO	N/A	N/A	N/A	N/A		
DRINKING	YSK4372C031-A	143A	Gym	Cooler	Not Detected	NO	N/A	N/A	N/A	N/A		
DRINKING	YSK4372C031-B	143A	Gym	Cooler	Not Detected	NO	N/A	N/A	N/A	N/A		
DRINKING	YSK4373C001	118	Hallway	Cooler	Not Detected	NO	N/A	N/A	N/A	N/A		
DRINKING	YSK4373C002-A	118	Hallway	Cooler	Not Detected	NO	N/A	N/A	N/A	N/A		
DRINKING	YSK4373C002-B	118	Hallway	Cooler	Not Detected	NO	N/A	N/A	N/A	N/A		
DRINKING	YSK4373C003-A	118	Hallway	Cooler	Not Detected	NO	N/A	N/A	N/A	N/A		
DRINKING	YSK4373C003-B	118	Hallway	Cooler	Not Detected	NO	N/A	N/A	N/A	N/A		
DRINKING	YSK4373C004-A	118	Hallway	Cooler	Not Detected	NO	N/A	N/A	N/A	N/A		
DRINKING	YSK4373C004-B	118	Hallway	Cooler	Not Detected	NO	N/A	N/A	N/A	N/A		
DRINKING	YSK4373B005	122	Classroom (ESL)	Bubbler	0.94	NO	N/A	N/A	N/A	N/A		
DRINKING	YSK4373B007	123	Classroom (General Purpose)	Bubbler	47	YES	3/16/2023	22	1.7	Pending replacement and resampling		
DRINKING	YSK4373B017	125	Classroom (General Purpose)	Bubbler	7.1	NO	N/A	N/A	N/A	N/A		
DRINKING	YSK4373B019	126	Classroom (Talented & Gifted)	Bubbler	3.4	NO	N/A	N/A	N/A	N/A		
DRINKING	YSK4373B020	126	Classroom (Talented & Gifted)	Bubbler	11	NO	N/A	N/A	N/A	N/A		
DRINKING	YSK4373B041	130	Classroom (Communication Impaired)	Bubbler	5.6	NO	N/A	N/A	N/A	N/A		
DRINKING	YSK4373B043	131	Classroom (General Purpose)	Bubbler	15	NO	N/A	N/A	N/A	N/A		
DRINKING	YSK4373B045	132	Reading Improvement Spec	Bubbler	3.5	NO	N/A	N/A	N/A	N/A		
DRINKING	YSK4373B047	133	Classroom (General Purpose)	Bubbler	17	YES	3/16/2023	34	3.1	Pending replacement and resampling		
DRINKING	YSK4373B057	135	Classroom (General Purpose)	Bubbler	3.9	NO	N/A	N/A	N/A	N/A		
DRINKING	YSK4373B059	136	Classroom (General Purpose)	Bubbler	2.2	NO	N/A	N/A	N/A	N/A		
DRINKING	YSK4373B061	137	Classroom (General Purpose)	Bubbler	2.1	NO	N/A	N/A	N/A	N/A		
DRINKING	YSK4373C087-A	202	Hallway	Cooler	0.67	NO	N/A	N/A	N/A	N/A		
DRINKING	YSK4373C087-B	202	Hallway	Cooler	0.72	NO	N/A	N/A	N/A	N/A		
DRINKING	YSK4373C088-A	202	Hallway	Cooler	Not Detected	NO	N/A	N/A	N/A	N/A		
DRINKING	YSK4373C088-B	202	Hallway	Cooler	Not Detected	NO	N/A	N/A	N/A	N/A		
DRINKING	YSK4373C089-A	202	Hallway	Cooler	Not Detected	NO	N/A	N/A	N/A	N/A		
DRINKING	YSK4373C089-B	202	Hallway	Cooler	Not Detected	NO	N/A	N/A	N/A	N/A		
DRINKING	YSK4373B090	209	Classroom (ESL)	Bubbler	3.1	NO	N/A	N/A	N/A	N/A		
DRINKING	YSK4373B092	210	Classroom (General Purpose)	Bubbler	7.6	NO	N/A	N/A	N/A	N/A		
DRINKING	YSK4373B102	212	Classroom (General Purpose)	Bubbler	5.1	NO	N/A	N/A	N/A	N/A		

Sample Summary Results Table

Priority Areas Lead Testing and Corrective Actions (March 2023)

FLEACT Yokosuka - Yokosuka Middle School

Buildings: 4272, 4373

SAMPLING LOCATION DESCRIPTION					INITIAL SAMPLING RESULTS			RE-SAMPLING RESULTS		CORRECTIVE ACTIONS	POST-CORRECTIVE ACTION SAMPLING RESULTS		
CATEGORY	SAMPLE ID	Room Number	Outlet Location	Outlet Description	Lead Screening Level of 15 ppb			Lead Screening Level of 15 ppb			Description	First Draw (ppb) (See note 2)	Follow up Flush - Collected 30 seconds after First Draw Sampling (ppb)
					First Draw (ppb)	Retest required?	Date Fixture Secured? (See Note 1)	First Draw (ppb)	Follow up Flush - Collected 30 seconds after First Draw Sampling (ppb)				
SAMPLING DATE RESULTS DATE					2/17/2023 - 3/1/2023				3/25/2023	3/25/2023	mm/dd/yyyy		
					3/15/2023				3/31/2023	3/31/2023	mm/dd/yyyy		
DRINKING	YSK4373B104	213	Classroom (General Purpose)	Bubbler	5.4	NO	N/A	N/A	N/A	N/A			
DRINKING	YSK4373B106	214	Classroom (General Purpose)	Bubbler	1.6	NO	N/A	N/A	N/A	N/A			
DRINKING	YSK4373B124	216	Classroom (General Purpose)	Bubbler	7.6	NO	N/A	N/A	N/A	N/A			
DRINKING	YSK4373B126	217	Classroom (Compensatory education)	Bubbler	5.4	NO	N/A	N/A	N/A	N/A			
DRINKING	YSK4373B128	218	Classroom (General Purpose)	Bubbler	50	YES	3/16/2023	3.7	2.9	No further action required			
DRINKING	YSK4373B130	219	Classroom (General Purpose)	Bubbler	8.1	NO	N/A	N/A	N/A	N/A			
DRINKING	YSK4373B132	220	Classroom (General Purpose)	Bubbler	1.3	NO	N/A	N/A	N/A	N/A			
DRINKING	YSK4373B134	221	Classroom (General Purpose)	Bubbler	6.1	NO	N/A	N/A	N/A	N/A			
DRINKING	YSK4373B136	222	Classroom (General Purpose)	Bubbler	2.5	NO	N/A	N/A	N/A	N/A			
DRINKING	YSK4373B138	223	Classroom (Learning Impaired)	Bubbler	18	YES	3/16/2023	15	2.8	No further action required			
DRINKING	YSK4373B140	224	Classroom (General Purpose)	Bubbler	2.5	NO	N/A	N/A	N/A	N/A			
DRINKING	YSK4373B150	226	Classroom (General Purpose)	Bubbler	2	NO	N/A	N/A	N/A	N/A			
DRINKING	YSK4373B164	309	Classroom (ESL)	Bubbler	4.3	NO	N/A	N/A	N/A	N/A			
DRINKING	YSK4373B166	310	Classroom (ESL)	Bubbler	3.4	NO	N/A	N/A	N/A	N/A			
DRINKING	YSK4373B176	312	Classroom (General Purpose)	Bubbler	Not Detected	NO	N/A	N/A	N/A	N/A			
DRINKING	YSK4373B178	313	Classroom (General Purpose)	Bubbler	3.7	NO	N/A	N/A	N/A	N/A			
DRINKING	YSK4373B180	314	Classroom (General Purpose)	Bubbler	4.8	NO	N/A	N/A	N/A	N/A			
DRINKING	YSK4373B198	316	Classroom (General Purpose)	Bubbler	4.6	NO	N/A	N/A	N/A	N/A			
DRINKING	YSK4373B200	317	Classroom (General Purpose)	Bubbler	2.9	NO	N/A	N/A	N/A	N/A			
DRINKING	YSK4373B202	318	Classroom (General Purpose)	Bubbler	4.9	NO	N/A	N/A	N/A	N/A			
DRINKING	YSK4373B204	319	Classroom (General Purpose)	Bubbler	22	YES	3/16/2023	N/A	N/A	Pending replacement and resampling			
DRINKING	YSK4373B206	320	Classroom (General Purpose)	Bubbler	8.3	NO	N/A	N/A	N/A	N/A			
DRINKING	YSK4373B208	321	Classroom (General Purpose)	Bubbler	3	NO	N/A	N/A	N/A	N/A			
DRINKING	YSK4373B210	322	Classroom (General Purpose)	Bubbler	10	NO	N/A	N/A	N/A	N/A			
DRINKING	YSK4373B212	323	Classroom (General Purpose)	Bubbler	5.2	NO	N/A	N/A	N/A	N/A			
DRINKING	YSK4373B214	324	Classroom (General Purpose)	Bubbler	17	YES	3/16/2023	3.6	0.7	No further action required			
DRINKING	YSK4373B224	326	Classroom (General Purpose)	Bubbler	18	YES	3/16/2023	10	2	No further action required			
DRINKING	YSK4373C161-A	NA	Hallway (3rd FLR)	Cooler	Not Detected	NO	N/A	N/A	N/A	N/A			
DRINKING	YSK4373C161-B	NA	Hallway (3rd FLR)	Cooler	Not Detected	NO	N/A	N/A	N/A	N/A			
DRINKING	YSK4373C162-A	NA	Hallway (3rd FLR)	Cooler	Not Detected	NO	N/A	N/A	N/A	N/A			
DRINKING	YSK4373C162-B	NA	Hallway (3rd FLR)	Cooler	Not Detected	NO	N/A	N/A	N/A	N/A			
DRINKING	YSK4373C163	NA	Hallway (3rd FLR)	Cooler	Not Detected	NO	N/A	N/A	N/A	N/A			
COOKING	YSK4372F103	242	Home Economic Room	Faucet	Not Detected	NO	N/A	N/A	N/A	N/A			
COOKING	YSK4372F104	242	Home Economic Room	Faucet	4.2	NO	N/A	N/A	N/A	N/A			
COOKING	YSK4372F105	242	Home Economic Room	Faucet	6.4	NO	N/A	N/A	N/A	N/A			
COOKING	YSK4372F106	242	Home Economic Room	Faucet	3.9	NO	N/A	N/A	N/A	N/A			
COOKING	YSK4372F107	242	Home Economic Room	Faucet	13	NO	N/A	N/A	N/A	N/A			
COOKING	YSK4372F108	242	Home Economic Room	Faucet	9.8	NO	N/A	N/A	N/A	N/A			
COOKING	YSK4372F109	242	Home Economic Room	Faucet	15	NO	N/A	N/A	N/A	N/A			
COOKING	YSK4372F056	144C	Kitchen	Faucet	Not Detected	NO	N/A	N/A	N/A	N/A			
COOKING	YSK4372F057	144C	Kitchen	Faucet	0.52	NO	N/A	N/A	N/A	N/A			
COOKING	YSK4372F058	144C	Kitchen	Faucet	Not Detected	NO	N/A	N/A	N/A	N/A			
COOKING	YSK4372F059	144C	Kitchen	Faucet	2.7	NO	N/A	N/A	N/A	N/A			
COOKING	YSK4372F060	144C	Kitchen	Faucet	0.62	NO	N/A	N/A	N/A	N/A			
COOKING	YSK4372F062	144C	Kitchen	Faucet	0.91	NO	N/A	N/A	N/A	N/A			
COOKING	YSK4372F063	144C	Kitchen	Faucet	Not Detected	NO	N/A	N/A	N/A	N/A			
COOKING	YSK4372F064	144C	Kitchen	Faucet	2.7	NO	N/A	N/A	N/A	N/A			
COOKING	YSK4372F065	144C	Kitchen	Faucet	Not Detected	NO	N/A	N/A	N/A	N/A			
COOKING	YSK4372F088	235C	Kitchen	Faucet	0.92	NO	N/A	N/A	N/A	N/A			
COOKING	YSK4372F089	236C	Kitchen	Faucet	0.85	NO	N/A	N/A	N/A	N/A			
WASHING	YSK4372F008	102	Men's Bathroom	Faucet	1.2	NO	N/A	N/A	N/A	N/A			
WASHING	YSK4372F009	102	Men's Bathroom	Faucet	1.4	NO	N/A	N/A	N/A	N/A			
WASHING	YSK4372F010	104	Women's Bathroom	Faucet	0.8	NO	N/A	N/A	N/A	N/A			
WASHING	YSK4372F011	104	Women's Bathroom	Faucet	1.3	NO	N/A	N/A	N/A	N/A			
WASHING	YSK4372F016	111	Boy's Bathroom	Faucet	Not Detected	NO	N/A	N/A	N/A	N/A			
WASHING	YSK4372F017	111	Boy's Bathroom	Faucet	1.1	NO	N/A	N/A	N/A	N/A			
WASHING	YSK4372F018	111	Boy's Bathroom	Faucet	1.4	NO	N/A	N/A	N/A	N/A			
WASHING	YSK4372F019	111	Boy's Bathroom	Faucet	2.1	NO	N/A	N/A	N/A	N/A			
WASHING	YSK4372F020	113	Girl's Bathroom	Faucet	0.79	NO	N/A	N/A	N/A	N/A			

Sample Summary Results Table
Priority Areas Lead Testing and Corrective Actions (March 2023)
FLEACT Yokosuka - Yokosuka Middle School
Buildings: 4272, 4373

SAMPLING LOCATION DESCRIPTION					INITIAL SAMPLING RESULTS			RE-SAMPLING RESULTS		CORRECTIVE ACTIONS	POST-CORRECTIVE ACTION SAMPLING RESULTS		
CATEGORY	SAMPLE ID	Room Number	Outlet Location	Outlet Description	Lead Screening Level of 15 ppb			Lead Screening Level of 15 ppb			Description	Recommended Level = 15 ppb	
					First Draw (ppb)	Retest required?	Date Fixture Secured? (See Note 1)	First Draw (ppb)	Follow up Flush - Collected 30 seconds after First Draw Sampling (ppb)			First Draw (ppb) (See note 2)	Follow up Flush - Collected 30 seconds after First Draw Sampling (ppb)
SAMPLING DATE RESULTS DATE					2/17/2023 - 3/1/2023				3/25/2023	3/25/2023	mm/dd/yyyy		
					3/15/2023				3/31/2023	3/31/2023	mm/dd/yyyy		
WASHING	YSK4372F021	113	Girl's Bathroom	Faucet	0.74	NO	N/A	N/A	N/A	N/A			
WASHING	YSK4372F022	113	Girl's Bathroom	Faucet	2	NO	N/A	N/A	N/A	N/A			
WASHING	YSK4372F023	113	Girl's Bathroom	Faucet	0.61	NO	N/A	N/A	N/A	N/A			
WASHING	YSK4372F026	148	Teacher's Office(Admin/Work Room)	Faucet	5	NO	N/A	N/A	N/A	N/A			
WASHING	YSK4372F028	149	Cent Supply Room	Faucet	2.1	NO	N/A	N/A	N/A	N/A			
WASHING	YSK4372F096	232	Girl's Bathroom	Faucet	1.1	NO	N/A	N/A	N/A	N/A			
WASHING	YSK4372F097	232	Girl's Bathroom	Faucet	Not Detected	NO	N/A	N/A	N/A	N/A			
WASHING	YSK4372F098	233	Boy's Bathroom	Faucet	1.2	NO	N/A	N/A	N/A	N/A			
WASHING	YSK4372F099	233	Boy's Bathroom	Faucet	Not Detected	NO	N/A	N/A	N/A	N/A			
WASHING	YSK4372F122	237	Classroom (GPC)	Faucet	0.66	NO	N/A	N/A	N/A	N/A			
WASHING	YSK4372F094	238	Classroom (GPC)	Faucet	1.5	NO	N/A	N/A	N/A	N/A			
WASHING	YSK4372F113	243	Classroom (Art Studio)	Faucet	2	NO	N/A	N/A	N/A	N/A			
WASHING	YSK4372F114	243	Classroom (Art Studio)	Faucet	1.8	NO	N/A	N/A	N/A	N/A			
WASHING	YSK4372F115	243	Classroom (Art Studio)	Faucet	2.8	NO	N/A	N/A	N/A	N/A			
WASHING	YSK4372F116	243	Classroom (Art Studio)	Faucet	2	NO	N/A	N/A	N/A	N/A			
WASHING	YSK4372F117	243	Classroom (Art Studio)	Faucet	2.1	NO	N/A	N/A	N/A	N/A			
WASHING	YSK4372F118	243	Classroom (Art Studio)	Faucet	2.7	NO	N/A	N/A	N/A	N/A			
WASHING	YSK4372F007	101L	Breakroom	Faucet	0.56	NO	N/A	N/A	N/A	N/A			
WASHING	YSK4372F012	107A	Nurse's Office	Faucet	1	NO	N/A	N/A	N/A	N/A			
WASHING	YSK4372F013	107B	Bathroom	Faucet	Not Detected	NO	N/A	N/A	N/A	N/A			
WASHING	YSK4372F014	109C	Teacher's Office	Faucet	1.7	NO	N/A	N/A	N/A	N/A			
WASHING	YSK4372F025	114A	Teacher's Office	Faucet	Not Detected	NO	N/A	N/A	N/A	N/A			
WASHING	YSK4372F035	143C	Boy's Bathroom	Faucet	Not Detected	NO	N/A	N/A	N/A	N/A			
WASHING	YSK4372F036	143C	Boy's Bathroom	Faucet	1	NO	N/A	N/A	N/A	N/A			
WASHING	YSK4372F042	143G	Girl's Bathroom	Faucet	Not Detected	NO	N/A	N/A	N/A	N/A			
WASHING	YSK4372F043	143G	Girl's Bathroom	Faucet	2.8	NO	N/A	N/A	N/A	N/A			
WASHING	YSK4372F049	143M	Bathroom	Faucet	Not Detected	NO	N/A	N/A	N/A	N/A			
WASHING	YSK4372F066	144E	Bathroom	Faucet	3.3	NO	N/A	N/A	N/A	N/A			
WASHING	YSK4372F055	144G	Room next to Stage	Faucet	33	YES	3/16/2023	8.9	2.1	Aerator removal and cleaning. No further action required			
WASHING	YSK4372F054	144J	Dressing Room	Faucet	28	YES	3/16/2023	21	1.5	Pending replacement and resampling			
WASHING	YSK4372F078	146F	Storage	Faucet	1.4	NO	N/A	N/A	N/A	N/A			
WASHING	YSK4372F068	147B	Teacher's Office	Faucet	0.56	NO	N/A	N/A	N/A	N/A			
WASHING	YSK4372F074	147C	Storage	Faucet	3.9	NO	N/A	N/A	N/A	N/A			
WASHING	YSK4372F075	147C	Storage	Faucet	58	YES	3/16/2023	7.5	0.9	Aerator removal and cleaning. No further action required			
WASHING	YSK4372F076	147C	Storage	Faucet	8.9	NO	N/A	N/A	N/A	N/A			
WASHING	YSK4372F070	147E	Classroom (Iwood shop)	Faucet	11	NO	N/A	N/A	N/A	N/A			
WASHING	YSK4372F071	147E	Classroom (Iwood shop)	Faucet	5.9	NO	N/A	N/A	N/A	N/A			
WASHING	YSK4372F072	147E	Classroom (Iwood shop)	Faucet	23	YES	3/16/2023	2.3	Not Detected	Aerator removal and cleaning. No further action required			
WASHING	YSK4372F027	148A	Teacher's Office(Admin/Work Room)	Faucet	2.3	NO	N/A	N/A	N/A	N/A			
WASHING	YSK4372F092	239A	Storage	Faucet	8	NO	N/A	N/A	N/A	N/A			
WASHING	YSK4372F100	240A	Storage	Faucet	1.2	NO	N/A	N/A	N/A	N/A			
WASHING	YSK4372F101	241A	Storage	Faucet	58	YES	3/16/2023	1.9	Not Detected	Aerator removal and cleaning. No further action required			
WASHING	YSK4372F119	NA	Patio	Faucet	1.3	NO	N/A	N/A	N/A	N/A			
WASHING	YSK4372F120	NA	Patio	Faucet	3.7	NO	N/A	N/A	N/A	N/A			
WASHING	YSK4372F121	NA	Patio	Faucet	2.5	NO	N/A	N/A	N/A	N/A			
WASHING	YSK4373F006	122	Classroom (ESL)	Faucet	2.1	NO	N/A	N/A	N/A	N/A			
WASHING	YSK4373F008	123	Classroom (General Purpose)	Faucet	24	YES	3/16/2023	4.8	0.6	Aerator removal and cleaning. No further action required			
WASHING	YSK4373F016	124A	Lab Prep Room	Faucet	2.8	NO	N/A	N/A	N/A	N/A			
WASHING	YSK4373F018	125	Classroom (General Purpose)	Faucet	1.5	NO	N/A	N/A	N/A	N/A			
WASHING	YSK4373F021	126	Classroom (Talented & Gifted)	Faucet	4.5	NO	N/A	N/A	N/A	N/A			
WASHING	YSK4373F022	126	Classroom (Talented & Gifted)	Faucet	2	NO	N/A	N/A	N/A	N/A			
WASHING	YSK4373F024	127	Classroom (Learning Impaired)	Faucet	2.2	NO	N/A	N/A	N/A	N/A			
WASHING	YSK4373F025	119	Boy's toilet	Faucet	1.7	NO	N/A	N/A	N/A	N/A			
WASHING	YSK4373F026	119	Boy's toilet	Faucet	1.1	NO	N/A	N/A	N/A	N/A			
WASHING	YSK4373F027	121	Girl's toilet	Faucet	0.87	NO	N/A	N/A	N/A	N/A			
WASHING	YSK4373F028	121	Girl's toilet	Faucet	0.75	NO	N/A	N/A	N/A	N/A			
WASHING	YSK4373F029	121	Girl's toilet	Faucet	Not Detected	NO	N/A	N/A	N/A	N/A			
WASHING	YSK4373F038	128A	Lab Prep Room	Faucet	2.1	NO	N/A	N/A	N/A	N/A			
WASHING	YSK4373F040	129	Classroom (General Purpose)	Faucet	1.7	NO	N/A	N/A	N/A	N/A			

Sample Summary Results Table

Priority Areas Lead Testing and Corrective Actions (March 2023)

FLEACT Yokosuka - Yokosuka Middle School

Buildings: 4272, 4373

SAMPLING LOCATION DESCRIPTION					INITIAL SAMPLING RESULTS			RE-SAMPLING RESULTS		CORRECTIVE ACTIONS	POST-CORRECTIVE ACTION SAMPLING RESULTS	
					Lead Screening Level of 15 ppb			Lead Screening Level of 15 ppb			Recommended Level = 15 ppb	
CATEGORY	SAMPLE ID	Room Number	Outlet Location	Outlet Description	First Draw (ppb)	Retest required?	Date Fixture Secured? (See Note 1)	First Draw (ppb)	Follow up Flush - Collected 30 seconds after First Draw Sampling (ppb)	Description	First Draw (ppb) (See note 2)	Follow up Flush - Collected 30 seconds after First Draw Sampling (ppb)
					2/17/2023 - 3/1/2023			3/25/2023	3/25/2023			
SAMPLING DATE RESULTS DATE					3/15/2023			3/15/2023	3/31/2023		mm/dd/yyyy	
											mm/dd/yyyy	
WASHING	YSK4373F042	130	Classroom (Communication Impaired)	Faucet	2	NO	N/A	N/A	N/A	N/A		
WASHING	YSK4373F044	131	Classroom (General Purpose)	Faucet	2.3	NO	N/A	N/A	N/A	N/A		
WASHING	YSK4373F046	132	Reading Improvement Spec	Faucet	1.3	NO	N/A	N/A	N/A	N/A		
WASHING	YSK4373F048	133	Classroom (General Purpose)	Faucet	1.4	NO	N/A	N/A	N/A	N/A		
WASHING	YSK4373F056	134A	Lab Prep Room	Faucet	3.6	NO	N/A	N/A	N/A	N/A		
WASHING	YSK4373F058	135	Classroom (General Purpose)	Faucet	1	NO	N/A	N/A	N/A	N/A		
WASHING	YSK4373F060	136	Classroom (Learning Impaired)	Faucet	14	NO	N/A	N/A	N/A	N/A		
WASHING	YSK4373F062	137	Classroom (General Purpose)	Faucet	1.2	NO	N/A	N/A	N/A	N/A		
WASHING	YSK4373F070	138A	Lab Prep Room	Faucet	4.4	NO	N/A	N/A	N/A	N/A		
WASHING	YSK4373F072	139	Classroom (General Purpose)	Faucet	2.8	NO	N/A	N/A	N/A	N/A		
WASHING	YSK4373F073	140	Boy's toilet	Faucet	Not Detected	NO	N/A	N/A	N/A	N/A		
WASHING	YSK4373F074	140	Boy's toilet	Faucet	Not Detected	NO	N/A	N/A	N/A	N/A		
WASHING	YSK4373F075	140	Boy's toilet	Faucet	Not Detected	NO	N/A	N/A	N/A	N/A		
WASHING	YSK4373F076	140	Boy's toilet	Faucet	Not Detected	NO	N/A	N/A	N/A	N/A		
WASHING	YSK4373F077	142	Girl's toilet	Faucet	0.67	NO	N/A	N/A	N/A	N/A		
WASHING	YSK4373F078	142	Girl's toilet	Faucet	0.53	NO	N/A	N/A	N/A	N/A		
WASHING	YSK4373F079	142	Girl's toilet	Faucet	0.5	NO	N/A	N/A	N/A	N/A		
WASHING	YSK4373F080	142	Girl's toilet	Faucet	1.8	NO	N/A	N/A	N/A	N/A		
WASHING	YSK4373F091	209	Classroom (ESL)	Faucet	2.1	NO	N/A	N/A	N/A	N/A		
WASHING	YSK4373F093	210	Classroom (General Purpose)	Faucet	1.2	NO	N/A	N/A	N/A	N/A		
WASHING	YSK4373F101	211A	Lab Prep Room	Faucet	2.5	NO	N/A	N/A	N/A	N/A		
WASHING	YSK4373F103	212	Classroom (General Purpose)	Faucet	3	NO	N/A	N/A	N/A	N/A		
WASHING	YSK4373F105	213	Classroom (General Purpose)	Faucet	4.6	NO	N/A	N/A	N/A	N/A		
WASHING	YSK4373F107	214	Classroom (General Purpose)	Faucet	2.8	NO	N/A	N/A	N/A	N/A		
WASHING	YSK4373F108	207	Boy's toilet	Faucet	0.69	NO	N/A	N/A	N/A	N/A		
WASHING	YSK4373F109	207	Boy's toilet	Faucet	Not Detected	NO	N/A	N/A	N/A	N/A		
WASHING	YSK4373F110	206	Girl's toilet	Faucet	0.87	NO	N/A	N/A	N/A	N/A		
WASHING	YSK4373F111	206	Girl's toilet	Faucet	1.4	NO	N/A	N/A	N/A	N/A		
WASHING	YSK4373F112	206	Girl's toilet	Faucet	0.93	NO	N/A	N/A	N/A	N/A		
WASHING	YSK4373F114	204	Men's toilet	Faucet	1.2	NO	N/A	N/A	N/A	N/A		
WASHING	YSK4373F115	205	Women's toilet	Faucet	Not Detected	NO	N/A	N/A	N/A	N/A		
WASHING	YSK4373F123	215A	Lab Prep Room	Faucet	3.9	NO	N/A	N/A	N/A	N/A		
WASHING	YSK4373F125	216	Classroom (General Purpose)	Faucet	4.6	NO	N/A	N/A	N/A	N/A		
WASHING	YSK4373F127	217	Classroom (Compensatory education)	Faucet	1.2	NO	N/A	N/A	N/A	N/A		
WASHING	YSK4373F129	218	Classroom (General Purpose)	Faucet	2.4	NO	N/A	N/A	N/A	N/A		
WASHING	YSK4373F131	219	Classroom (General Purpose)	Faucet	0.59	NO	N/A	N/A	N/A	N/A		
WASHING	YSK4373F133	220	Classroom (General Purpose)	Faucet	1.3	NO	N/A	N/A	N/A	N/A		
WASHING	YSK4373F135	221	Classroom (General Purpose)	Faucet	1.5	NO	N/A	N/A	N/A	N/A		
WASHING	YSK4373F137	222	Classroom (General Purpose)	Faucet	31	YES	3/16/2023	1.8	Not Detected	Aerator removal and cleaning. No further action required		
WASHING	YSK4373F139	223	Classroom (Learning Impaired)	Faucet	3.3	NO	N/A	N/A	N/A	N/A		
WASHING	YSK4373F141	224	Classroom (General Purpose)	Faucet	1.3	NO	N/A	N/A	N/A	N/A		
WASHING	YSK4373F149	225A	Lab Prep Room	Faucet	27	YES	3/16/2023	6.6	0.8	Aerator removal and cleaning. No further action required		
WASHING	YSK4373F151	226	Classroom (General Purpose)	Faucet	1.8	NO	N/A	N/A	N/A	N/A		
WASHING	YSK4373F152	227	Boy's toilet	Faucet	0.75	NO	N/A	N/A	N/A	N/A		
WASHING	YSK4373F153	227	Boy's toilet	Faucet	1	NO	N/A	N/A	N/A	N/A		
WASHING	YSK4373F154	227	Boy's toilet	Faucet	0.75	NO	N/A	N/A	N/A	N/A		
WASHING	YSK4373F155	227	Boy's toilet	Faucet	0.79	NO	N/A	N/A	N/A	N/A		
WASHING	YSK4373F156	228	Girl's toilet	Faucet	Not Detected	NO	N/A	N/A	N/A	N/A		
WASHING	YSK4373F157	228	Girl's toilet	Faucet	0.5	NO	N/A	N/A	N/A	N/A		
WASHING	YSK4373F158	228	Girl's toilet	Faucet	Not Detected	NO	N/A	N/A	N/A	N/A		
WASHING	YSK4373F159	228	Girl's toilet	Faucet	1.8	NO	N/A	N/A	N/A	N/A		
WASHING	YSK4373F165	309	Classroom (ESL)	Faucet	4.9	NO	N/A	N/A	N/A	N/A		
WASHING	YSK4373F167	310	Classroom (ESL)	Faucet	4.5	NO	N/A	N/A	N/A	N/A		
WASHING	YSK4373F175	311A	Lab Prep Room	Faucet	3.7	NO	N/A	N/A	N/A	N/A		
WASHING	YSK4373F177	312	Classroom (General Purpose)	Faucet	1.3	NO	N/A	N/A	N/A	N/A		
WASHING	YSK4373F179	313	Classroom (General Purpose)	Faucet	2.3	NO	N/A	N/A	N/A	N/A		
WASHING	YSK4373F181	314	Classroom (General Purpose)	Faucet	1.6	NO	N/A	N/A	N/A	N/A		
WASHING	YSK4373F182	307	Boy's toilet	Faucet	0.79	NO	N/A	N/A	N/A	N/A		
WASHING	YSK4373F183	307	Boy's toilet	Faucet	Not Detected	NO	N/A	N/A	N/A	N/A		

Sample Summary Results Table

Priority Areas Lead Testing and Corrective Actions (March 2023)

FLEACT Yokosuka - Yokosuka Middle School

Buildings: 4272, 4373

SAMPLING LOCATION DESCRIPTION					INITIAL SAMPLING RESULTS			RE-SAMPLING RESULTS		CORRECTIVE ACTIONS	POST-CORRECTIVE ACTION SAMPLING RESULTS	
					Lead Screening Level of 15 ppb			Lead Screening Level of 15 ppb			Recommended Level = 15 ppb	
CATEGORY	SAMPLE ID	Room Number	Outlet Location	Outlet Description	First Draw (ppb)	Retest required?	Date Fixture Secured? (See Note 1)	First Draw (ppb)	Follow up Flush - Collected 30 seconds after First Draw Sampling (ppb)	Description	First Draw (ppb) (See note 2)	Follow up Flush - Collected 30 seconds after First Draw Sampling (ppb)
SAMPLING DATE RESULTS DATE					2/17/2023 - 3/1/2023			3/25/2023	3/25/2023		mm/dd/yyyy	
					3/15/2023			3/31/2023	3/31/2023		mm/dd/yyyy	
WASHING	YSK4373F184	306	Girl's toilet	Faucet	1	NO	N/A	N/A	N/A	N/A		
WASHING	YSK4373F185	306	Girl's toilet	Faucet	0.89	NO	N/A	N/A	N/A	N/A		
WASHING	YSK4373F186	306	Girl's toilet	Faucet	1.3	NO	N/A	N/A	N/A	N/A		
WASHING	YSK4373F188	304	Men's toilet	Faucet	1.1	NO	N/A	N/A	N/A	N/A		
WASHING	YSK4373F189	305	Women's toilet	Faucet	0.7	NO	N/A	N/A	N/A	N/A		
WASHING	YSK4373F197	315A	Lab Prep Room	Faucet	6.4	NO	N/A	N/A	N/A	N/A		
WASHING	YSK4373F199	316	Classroom (General Purpose)	Faucet	2.1	NO	N/A	N/A	N/A	N/A		
WASHING	YSK4373F201	317	Classroom (General Purpose)	Faucet	6.1	NO	N/A	N/A	N/A	N/A		
WASHING	YSK4373F203	318	Classroom (General Purpose)	Faucet	4.5	NO	N/A	N/A	N/A	N/A		
WASHING	YSK4373F205	319	Classroom (General Purpose)	Faucet	1.9	NO	N/A	N/A	N/A	N/A		
WASHING	YSK4373F207	320	Classroom (General Purpose)	Faucet	4.9	NO	N/A	N/A	N/A	N/A		
WASHING	YSK4373F209	321	Classroom (General Purpose)	Faucet	3.6	NO	N/A	N/A	N/A	N/A		
WASHING	YSK4373F211	322	Classroom (General Purpose)	Faucet	1.2	NO	N/A	N/A	N/A	N/A		
WASHING	YSK4373F213	323	Classroom (General Purpose)	Faucet	3.5	NO	N/A	N/A	N/A	N/A		
WASHING	YSK4373F215	324	Classroom (General Purpose)	Faucet	23	YES	3/16/2023	1.9	Not Detected	Aerator removal and cleaning. No further action required		
WASHING	YSK4373F223	325A	Lab Prep Room	Faucet	2.5	NO	N/A	N/A	N/A	N/A		
WASHING	YSK4373F225	326	Classroom (General Purpose)	Faucet	2.6	NO	N/A	N/A	N/A	N/A		
WASHING	YSK4373F226	327	Boy's toilet	Faucet	0.73	NO	N/A	N/A	N/A	N/A		
WASHING	YSK4373F227	327	Boy's toilet	Faucet	0.69	NO	N/A	N/A	N/A	N/A		
WASHING	YSK4373F228	327	Boy's toilet	Faucet	0.76	NO	N/A	N/A	N/A	N/A		
WASHING	YSK4373F229	327	Boy's toilet	Faucet	Not Detected	NO	N/A	N/A	N/A	N/A		
WASHING	YSK4373F230	328	Girl's toilet	Faucet	1.1	NO	N/A	N/A	N/A	N/A		
WASHING	YSK4373F231	328	Girl's toilet	Faucet	1.2	NO	N/A	N/A	N/A	N/A		
WASHING	YSK4373F232	328	Girl's toilet	Faucet	1.6	NO	N/A	N/A	N/A	N/A		
WASHING	YSK4373F233	328	Girl's toilet	Faucet	Not Detected	NO	N/A	N/A	N/A	N/A		

Notes:

* Affected outlets were immediately secured after receiving communication from the lab on results exceeding the recommended level of 15 ppb.

CATEGORY	INITIAL SAMPLING RESULTS	RE-SAMPLING RESULTS				POST-CORRECTIVE ACTION RESULTS
	Lead Screening Level of 15 ppb					
	First Draw (ppb)	Water Fountain	First Draw (ppb)	Follow up Flush	First Draw (ppb)	
Total Drinking	91	0	6	6	0	
Total Drinking > 15 ppb	7	0	2	0	0	
Total Cooking	18	0	0	0	0	
Total Cooking> 15 ppb	0	0	0	0	0	
Total Washing	152	0	9	9	0	
Total Washing > 15 ppb	9	0	1	0	0	
Total Samples	261	0	15	15	0	
Total Samples > 15 ppb	16	0	3	0	0	

Floor Plan - Yokosuka Middle School

Bldg. 4372, 4373, 4375

F = Faucet

C = Cooler water fountain

B = Bubbler water fountain

No Sampling at the following:

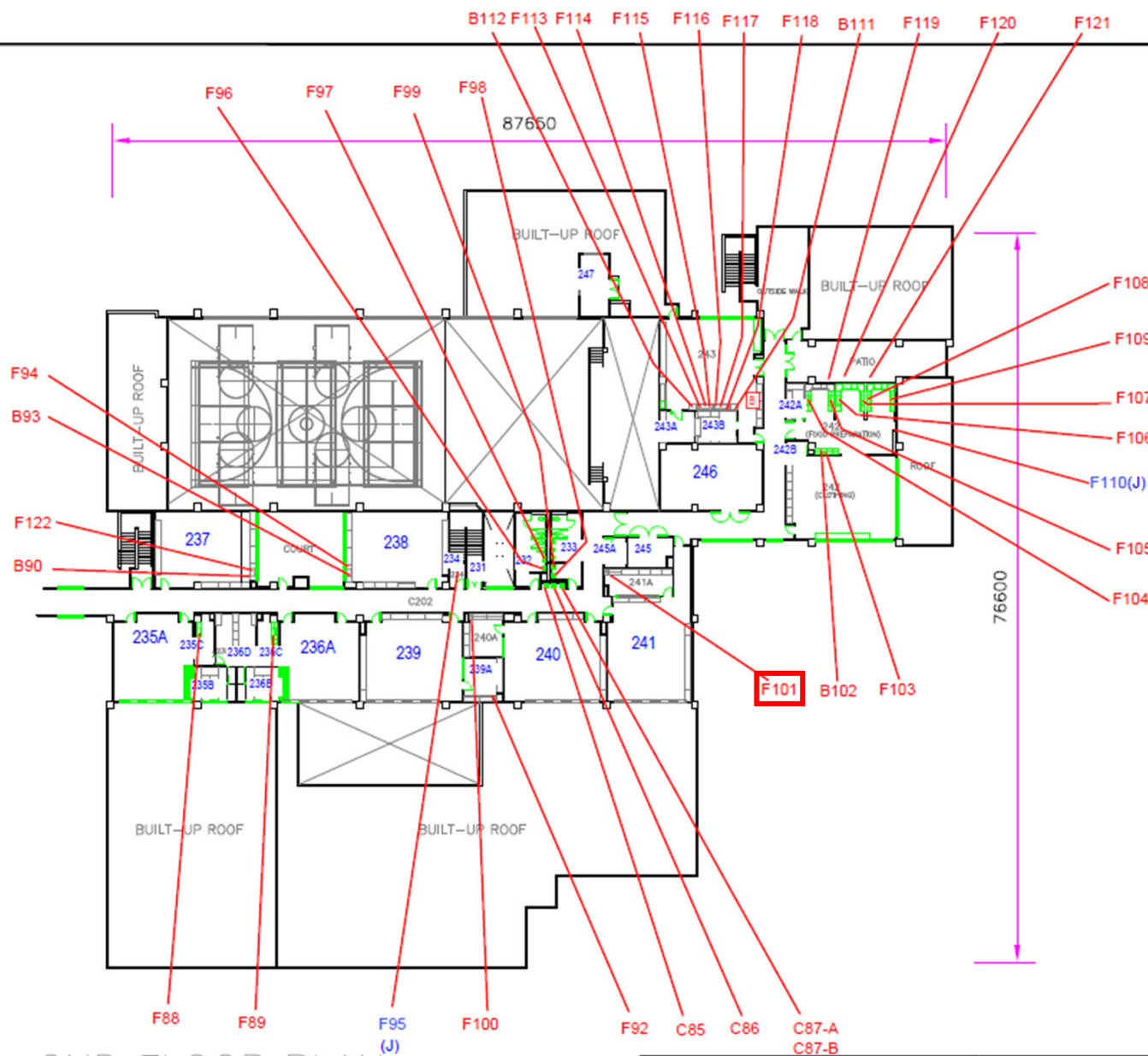
S = Shower

J = Janitor sink


HB = Hose Bibb

L = Lab Sink

ROOM NAMES
 C202 Corridor
 231 Stair(1)
 232 Girl's toilet
 233 Boy's toilet
 234 Janitor
 235A Host nation
 235B Tatami room
 235C Kitchen
 235D Storage
 236A Host nation
 236B Tatami room
 236C Kitchen
 236D Storage
 237 GPC
 238 GPC
 239 Computer lab
 239A Storage
 240 Computer lab
 240A Office
 241 Computer lab
 241A Storage
 242 Sewing/Food prep
 242A Storage
 242B Storage
 243 Art studio
 243A Work/Storage room
 243B Work room
 245 MECH room
 245A Telecom workroom
 246 MECH room
 247 MECH room



2ND FLOOR PLAN

TITLE	4372	
YOKOSUKA MIDDLE SCHL BLDG-A		
Scale 1/600	Unit=mm	Drawing by: Pw52 Drawing Dt: 2005/04/13 Last Modified by: PRY12, K.Tomita Date(yyyy/mm/dd): 2011/04/13

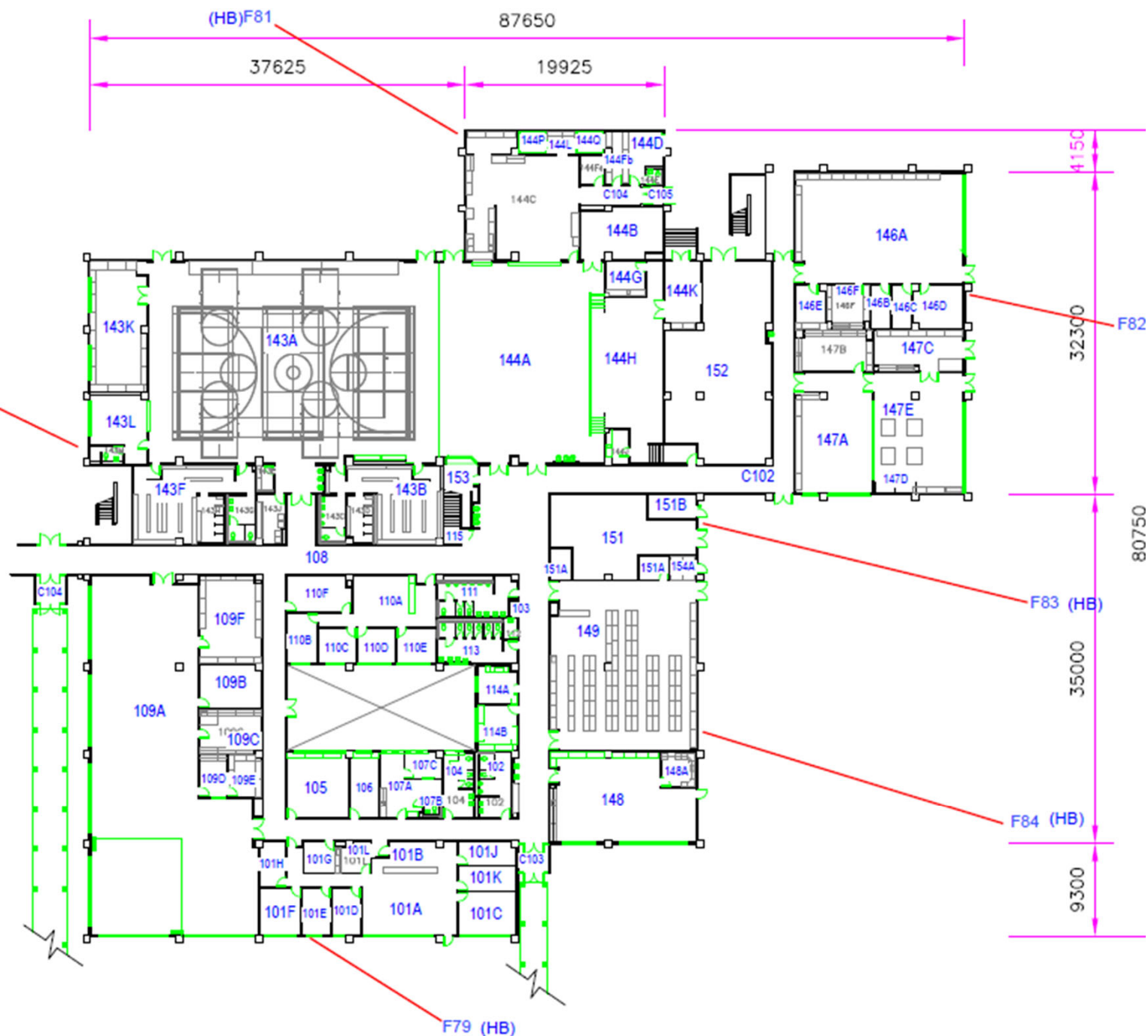
NAMES

e
ption
e
principal office
principal office
ipal office
e
age
e
k room
toilet
je
m's toilet
rence

147A Welding
147B Office
147C Storage
147D Storage
147E Wood shop
148 Admin/work room
148A Admin/work room
149 Cent supply room
151 Mechanical room
151A Mechanical room
151B Mechanical room
152 Mechanical room
153 Admin/work room
154A Storage

ie room
it
l area
or
ibule
ibule
center
in/work room
e
e
in/work room
in/work room
el/reception
e
e
e
erence
toilet
r
toilet
e
e

i
s locker room
s toilet
s shower room
or
i locker room
s toilet
s shower room
age
age
e
st
leria
age
ven
e
d (men/women)
oe
storage
e
sing room
hanical room
storage
idor
ibule
storage
storage
idor
ic room
ic room



Outdoor

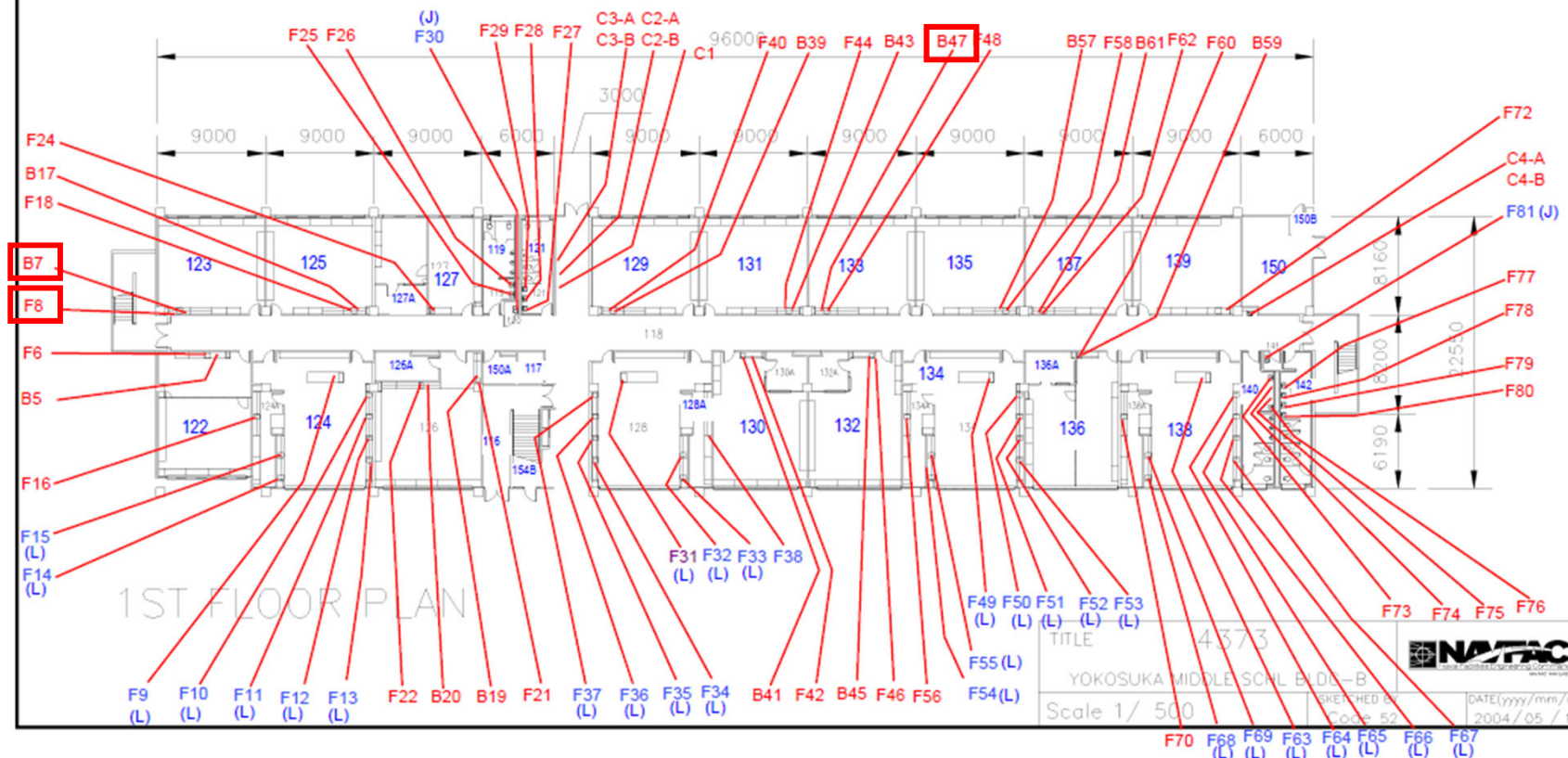
TITLE

4372

BLDG 4373 1F

ROOM NAMES

116 Stair (2)	127A Office	136 Learning impaired (mild/mod)
117 Elevator	128 Science Lab	136A Office
118 Corridor	128A Lab prep room	137 General purpose classroom(6)
119 Boy's Toilet	129 General purpose classroom(6)	138 Science lab
120 Janitor	130 Communication impaired	138A Lab prep room
121 Girl's Toilet	130A Office	139 General purpose classroom(6)
122 English as a second language	131 General purpose classroom(6)	140 Boy's toilet
123 General purpose classroom(6)	132 Reading improvement spec	141 Janitor
124 Science Lab	132A Office	142 Girl's toilet
124A Lab prep room	133 General purpose classroom(6)	150 MECH room
125 General purpose classroom(6)	134 Science Lab	150A Telecom room
126 Talented & Gifted	134A Lab prep room	150B Storage
127 Learning impaired (MDD/Severe)	135 General purpose classroom(6)	150B Storage

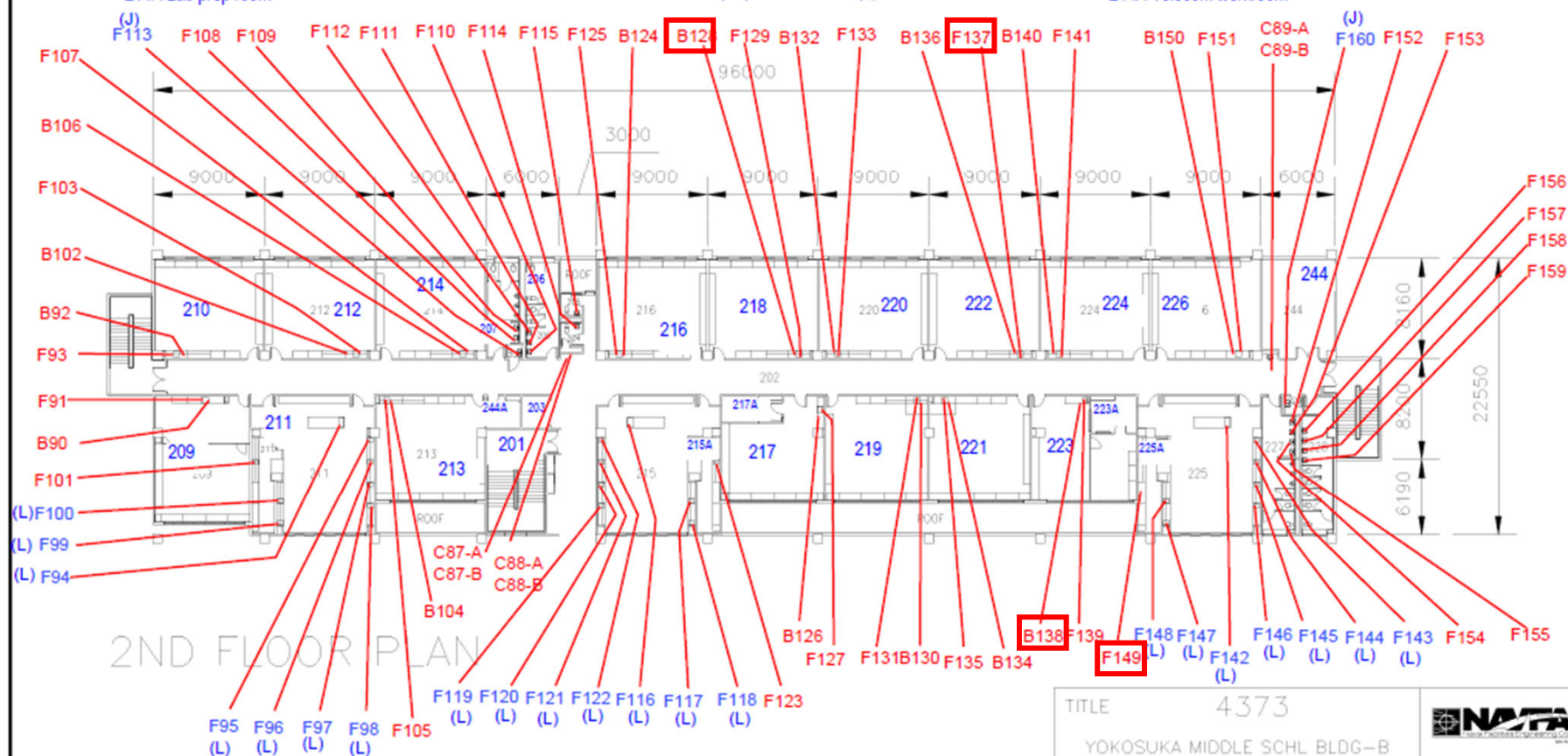


B: Bubbler
F: Faucet
C: Cooler

201 Stair(2)
202 Corridor
203 Elevator
204 Men's toilet
205 Women's toilet
206 Girl's toilet
207 Boy's toilet
208 Janitor
209 English as a second language
210 General purpose classroom(7)
211 Science Lab
211A Lab prep room

212 General purpose classroom(7)
213 General purpose classroom(7)
214 General purpose classroom(7)
215 Science Lab
215A Lab prep room
216 General purpose classroom(7)
217 Compensatory education
217A Office
218 General purpose classroom(7)
219 General purpose classroom(7)
220 General purpose classroom(7)
221 General purpose classroom(7)

222 General purpose classroom(7)
223 Learning impaired (mild/mod)
223A Office
224 General purpose classroom(7)
225 Science Lab
225A Lab prep room
226 General purpose classroom(7)
227 Boy's toilet
228 Girl's toilet
229 Janitor
244 MECH room
244A Telecom workroom



TITLE		4373
YOKOSUKA MIDDLE SCHL BLDG-B		
Scale 1/ 500		SKETCH Code



DATE(yyyy/mm/dd)
2004/05/12

BLDG 4373 3F

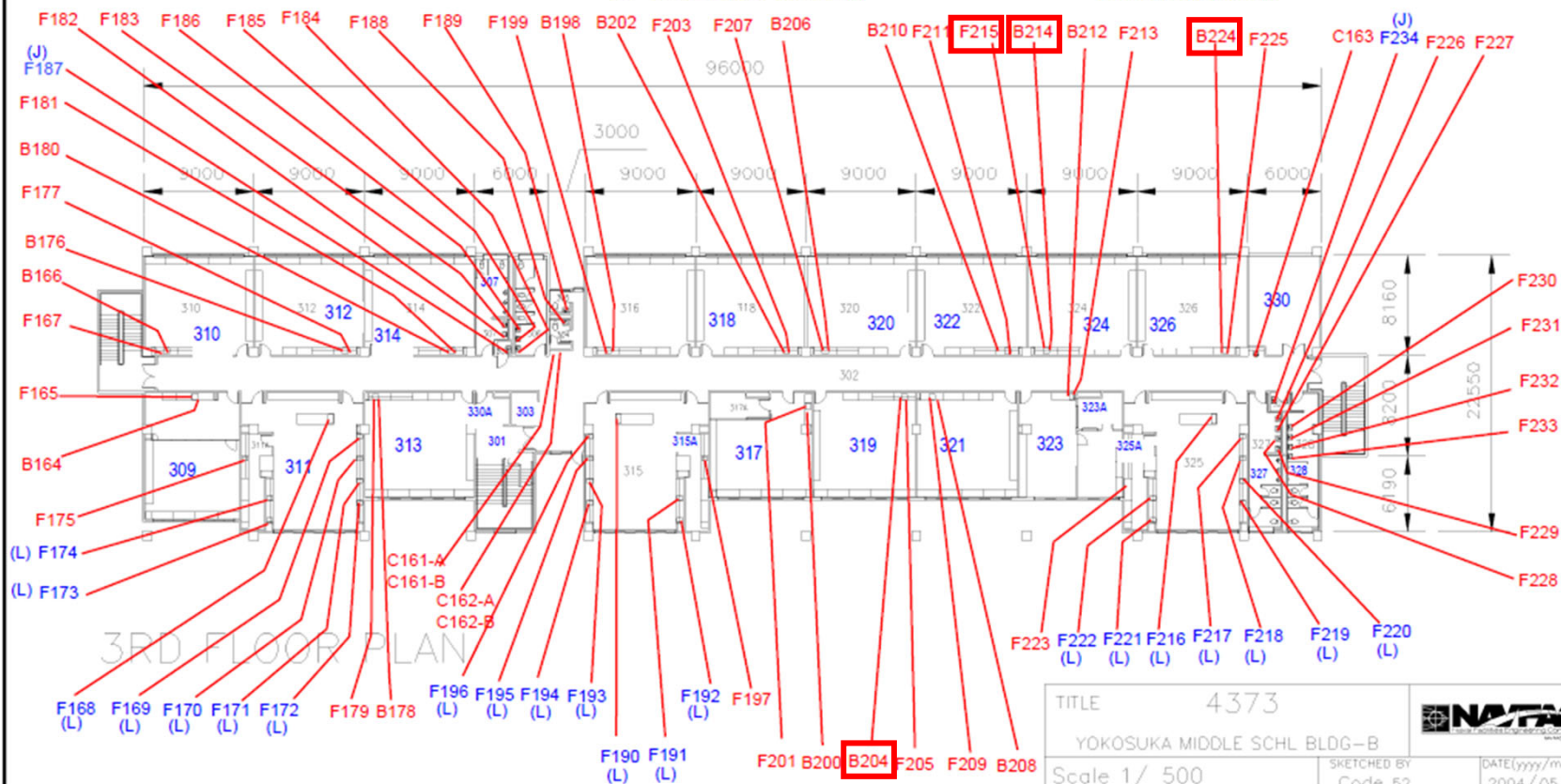
ROOM NAMES

301 STAIR(2)
302 CORRIDOR
303 ELEVATOR
304 MEN'S TOILET
305 WOMEN'S TOILET
306 GIRL'S TOILET
307 BOY'S TOILET
308 JANITOR
309 ENGLISH AS A SECOND LANGUAGE
310 GENERAL PURPOSE CLASSROOM(8)
311 SCIENCE LABORATORY
311A LABORATORY PREP ROOM

312 General purpose classroom(8)
313 General purpose classroom(8)
314 General purpose classroom(8)
315 Science Lab
315A Lab prep room
316 General purpose classroom(8)
317 Compensatory education
317A Office
318 General purpose classroom(8)
319 General purpose classroom(8)
320 General purpose classroom(8)
321 General purpose classroom(8)

322 General purpose classroom(8)
323 Emotionally impaired
323A Office
324 General purpose classroom(8)
325 Science Lab
325A Lab prep room
326 General purpose classroom(8)
327 Boy's toilet
328 Girl's toilet
329 Janitor
330 MECH room
330A Telecom workroom

B: Bubblers
F: Faucet
C: Cooler



BLDG 4373 OUTDOOR

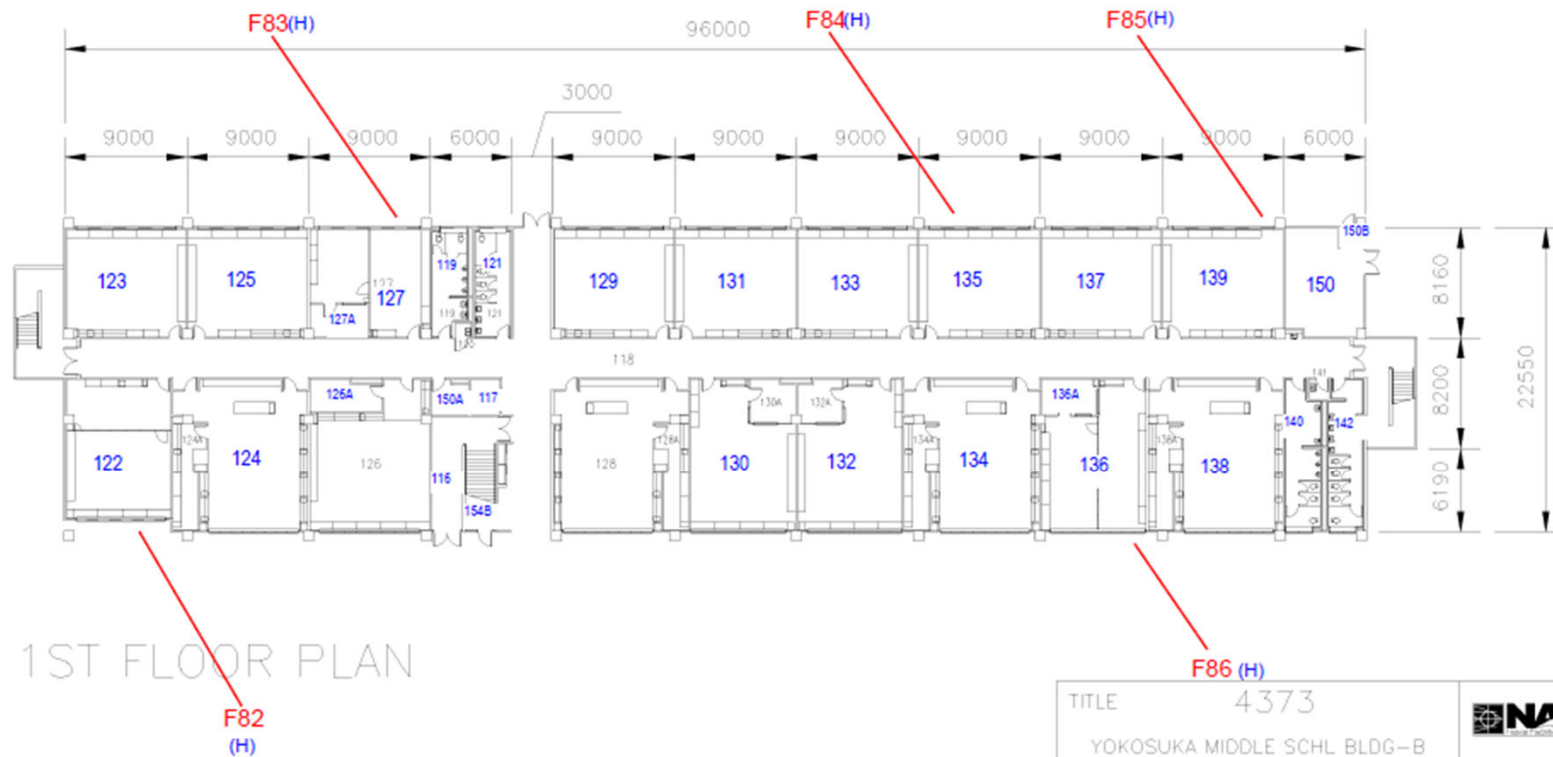
ROOM NAMES

116 Stair (2)
117 Elevator
118 Corridor
119 Boy's Toilet
120 Janitor
121 Girl's Toilet
122 English as a second language
123 General purpose classroom(6)
124 Science Lab
124A Lab prep room
125 General purpose classroom(6)
126 Talented & Gifted
127 Learning impaired (MDD/Severe)

127A Office
128 Science Lab
128A Lab prep room
129 General purpose classroom(6)
130 Communication impaired
130A Office
131 General purpose classroom(6)
132 Reading improvement spec
132A Office
133 General purpose classroom(6)
134 Science Lab
134A Lab prep room
135 General purpose classroom(6)

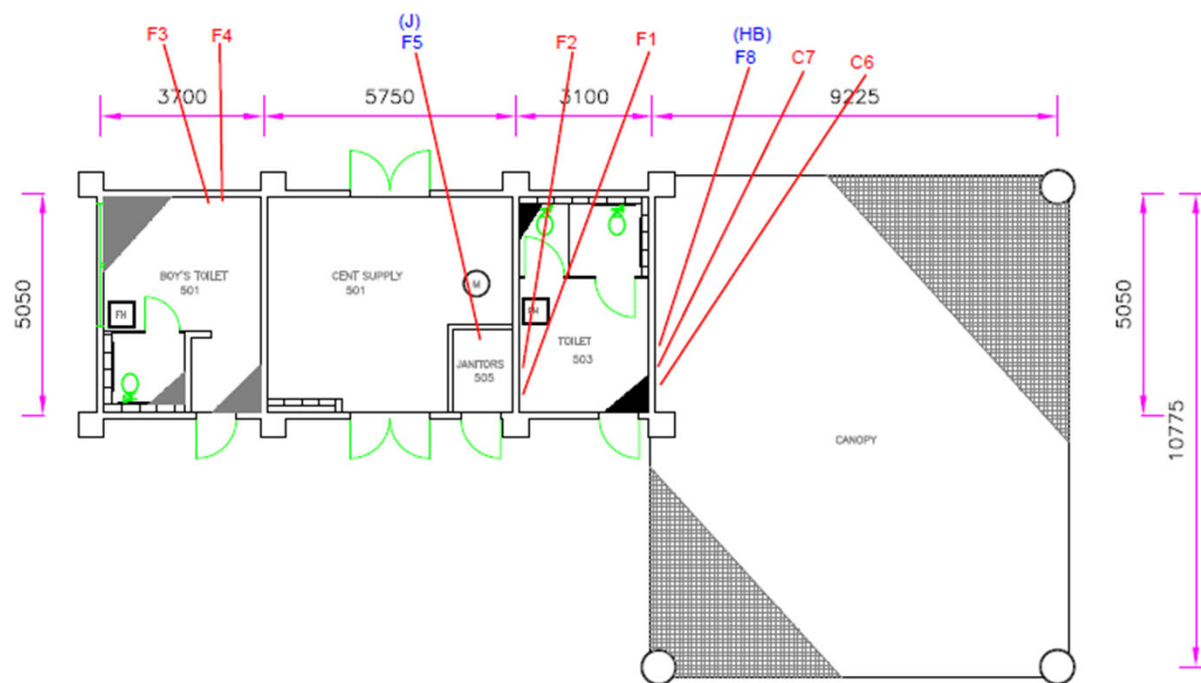
136 Learning impaired (mild/mod)
136A Office
137 General purpose classroom(6)
138 Science lab
138A Lab prep room
139 General purpose classroom(6)
140 Boy's toilet
141 Janitor
142 Girl's toilet
150 MECH room
150A Telecom room
150B Storage
150B Storage

B: Bubbler
F: Faucet
C: Cooler




1ST FLOOR PLAN

TITLE 4373		
YOKOSUKA MIDDLE SCHL BLDG-B		
Scale 1/ 500	SKETCHED BY Code 52	DATE/yyyy/mm/dd 2004/05/12



1ST FLOOR PLAN

TITLE 4375			
PAVILION, YOKOSUKA MDL SCHL		Drawing by: Pw52 Drawing Dt: 2004/04/09	
Scale 1/150	Unit=mm	Last Modified by PRY12, K.Tomita	Date(yyyy/mm/dd) 2011/09/07

