



DEPARTMENT OF THE NAVY
COMMANDER, FLEET ACTIVITIES YOKOSUKA
PSC 473 BOX 1
FPO AP 96349

5090
Ser N00/269
20 Apr 23

From: Commander, Fleet Activities Yokosuka
To: Parents and Staff

Subj: DRINKING WATER LEAD SAMPLING RESULTS AT KINNICK HIGH SCHOOL

Encl: (1) Overview of Testing Results for Lead in Drinking Water and Corrective Actions for
Fleet Activities Yokosuka - Kinnick High School (Building 1902)
(2) Sample Summary Results Table
(3) Floor Plan - Kinnick High School

1. The safety and health of children and staff at our Child Development Centers (CDCs), Schools, and Youth Centers (YCs) is a top priority. The water outlets that could potentially be used for cooking, washing, or drinking at our Schools, CDCs, and YCs on Yokosuka Main Base have been tested.

2. The results of recent water testing of 137 drinking water outlets at Kinnick High School have been received. Of these, one (1) outlet tested higher than Navy screening level of 15 parts per billion (ppb) for lead, which is the level requiring action to include additional testing and corrective measures. Lead in drinking water typically comes from the existing plumbing inside buildings including service lines, fittings, solder, water coolers, or water faucets. Lead is more likely to be found in drinking water when the water has not been run for an extended period of time and has been sitting in the system (e.g., overnight, weekends, etc.).

3. The lead levels were higher than the screening level at a faucet in room 504. After receiving the test results, this water outlet was immediately taken out of service. Details on the corrective actions we plan to take to reduce the amount of lead in water at this fixture is discussed in enclosure (1). Additionally, enclosure (2) and enclosure (3) indicate the location of the fixture that had lead levels higher than the screening level.

4. If you have any questions or concerns regarding the LIPA Program, please contact the FLEACT Yokosuka Public Affairs Officer at CFAYPublicAffairsOfficer@gmail.com.

5. Here are some additional resources you may find informative:

a. Environmental Protection Agency. (lead in drinking water in schools and day care centers)
<https://www.epa.gov/ground-water-and-drinking-water/3ts-reducing-lead-drinking-water>

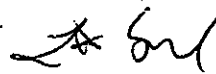
Subj: DRINKING WATER LEAD SAMPLING RESULTS AT KINNICK HIGH SCHOOL

b. Annual water quality report for the installation.

<https://cnrj.cnic.navy.mil/Operations-and-Management/Water-Quality-Information/Water-quality-reports/#CFAY>

6. If you have any health-related questions or concerns about lead exposure, you are encouraged to contact your health care provider or if you are a TRICARE beneficiary use the Yokosuka Naval Hospital central appointment line at DSN: 315-243-5352. If unable to acquire information from previously discussed sources, please contact my staff immediately.

7. This safety concern will continue to be monitored, water quality tested and actions taken where necessary at Kinnick High School to ensure our drinking water lead levels are lower than screening levels. Fleet Activities Yokosuka is committed to the safety and health of all personnel and family members using our facilities and will keep you updated on this issue.



L.D. SOBOL

Copy to:
CNIC N45
NAVFAC, Director of Environmental Programs

Overview of Testing Results for Lead in Drinking Water and Corrective Actions for Fleet Activities Yokosuka - Kinnick High School (Building 1902)

The Navy is committed to maintaining safe drinking water on its installations. Yokosuka City water supplied to the Navy and the Navy's water distribution system is regularly tested and in compliance with the Safe Drinking Water Act. Because lead exposure is a particular concern for children, and lead may be added to drinking water due to its presence in pipes, fittings, solder, and fixtures inside a building, the Navy policy requires that we test the lead content of drinking water in priority areas such as Schools, youth centers (YCs), and child development centers (CDCs) every five years.

Navy environmental personnel conducted lead testing at the FLEACT Yokosuka's Kinnick High School in accordance with Navy and guidelines. Samples from various locations in the school were sent to a Navy Water Quality Oversight Council validated laboratory for analysis.

At FLEACT Yokosuka's Kinnick High School, outlets used for drinking, cooking, and washing were tested. Out of 137 samples collected, 1 water outlet initially tested above the Navy screening level of 15 parts per billion (ppb) for lead in drinking water in schools and CDCs.

The exceeding outlet was a faucet used for washing, located in room 504. The outlet was flushed and resampled. Based on follow-up results, elevated levels of lead appeared to be caused by the components of the faucet. Corrective action (i.e. replacement with new certified lead free material or removal from service) will be implemented.

The supply valve to the outlet will remain secured rendering it unusable. Per EPA guidance, the outlet will remain out of service until corrective actions are completed. Testing will be conducted after implementation of corrective measures.

A copy of all test results is enclosed for your information. The test results are presented in two tables:

- Table 1 **Summary of Results** summarizes the data by category of use (e.g., drinking, cooking, and washing).
- Table 2 **Summary Statistics** summarizes all the data.

A floor plan of Kinnick High School has also been included to show the location for the fixture that exceeded 15 ppb.

Table 1 provides a description of each sampling location using three columns; *Category*, *Sampling ID*, and *Outlet Description*. The *Category* column gives information about whether the outlet is used for drinking water (water fountain), cooking (food preparation), or washing (primarily hand-washing or brushing teeth). The *Sample ID* column is the identification used to label each sample bottle. The *Outlet Description* column contains additional information to describe the outlet sampled under each category.

The next set of columns in **Table 1** provide *Initial Sampling Results*, and for those locations that exceeded the recommended screening level of 15 ppb the *Re-sampling Results*.

EPA sampling protocol requires water to not be used for between 8 and 18 hours prior to first draw sampling. Therefore, *Initial Sampling Results were from* first draw samples collected early in the morning before the school opened and before any water was used. The *Initial Sampling Results* also indicate whether resampling is required and the date that fixtures greater than 15 ppb were secured. Outlets that exceeded 15 ppb are highlighted in yellow.

The *Re-sampling Results* includes columns for *First Draw* and flushing samples which help determine the source of lead.

- If the lead concentration of the 30 second flush sample resulted in lower than 15 ppb lead, the aerators were the source of lead and the outlet can be used for drinking if the aerators are cleaned on a regular basis.
- If the lead concentration of the resampled first draw (but not the follow up 30 second flush) was greater than 15 ppb, the fixture was the source of lead. These fixtures can be used if water is flushed for 30 seconds before first use of the day or if the fixtures are replaced and retesting confirms that the new fixtures do not leach lead. The washing sink in room 319 fits into this category.
- If the lead concentration of the sample following the 30 second flush was greater than 15 ppb and greater than the lead concentration of the first draw resample, the source of lead is the plumbing upstream of the outlet.

The *Corrective Actions* column describes actions that will be taken to remediate the source of lead. In the event that fixtures or upstream piping are replaced, there are columns for sampling data that confirms that the corrective actions were successful in reducing lead below 15 ppb.

To answer any questions you may have on the sampling program contact the FLEACT Yokosuka Public Affairs Officer at CFAYPublicAffairsOfficer@gmail.com. If you have any health questions or concerns, you are encouraged to contact your health care provider.

Sample Summary Results Table

Priority Areas Lead Testing and Corrective Actions (March 2023)

FLEACT Yokosuka - Kinnick High School

Buildings: 1901, 1902, 1953, 1954, 1955, 3365

Table 1. Summary of Results

SAMPLING LOCATION DESCRIPTION					INITIAL SAMPLING RESULTS			RE-SAMPLING RESULTS		CORRECTIVE ACTIONS	POST-CORRECTIVE ACTION SAMPLING RESULTS		
					Lead Screening Level of 15 ppb			Lead Screening Level of 15 ppb			Recommended Level = 15 ppb		
CATEGORY	SAMPLE ID	Room Number	Outlet Location	Outlet Description	First Draw (ppb)	Retest required?	Date Fixture Secured? (See Note 1)	First Draw (ppb)	Follow up Flush - Collected 30 seconds after First Draw Sampling (ppb)	Description	First Draw (ppb) (See note 2)	Follow up Flush - Collected 30 seconds after First Draw Sampling (ppb)	
SAMPLING DATE RESULTS DATE					3/1/2023-3/10/2023				3/25/2023	3/25/2023		mm/dd/yyyy	
					3/16/2023				3/31/2023	3/31/2023		mm/dd/yyyy	
DRINKING	YSK1901C033-A	Corridor 1F	NA	Cooler	Not Detected	NO	N/A	N/A	N/A	N/A			
DRINKING	YSK1901C033-B	Corridor 1F	NA	Cooler	Not Detected	NO	N/A	N/A	N/A	N/A			
DRINKING	YSK1901C034-A	Corridor 1F	NA	Cooler	Not Detected	NO	N/A	N/A	N/A	N/A			
DRINKING	YSK1901C034-B	Corridor 1F	NA	Cooler	Not Detected	NO	N/A	N/A	N/A	N/A			
DRINKING	YSK1901C051-A	Cafeteria /MultiPurposRM	115	Cooler	Not Detected	NO	N/A	N/A	N/A	N/A			
DRINKING	YSK1901C051-B	Cafeteria/MultiPurposRM	115	Cooler	Not Detected	NO	N/A	N/A	N/A	N/A			
DRINKING	YSK1901C063-A	Corridor 2F (Near girls Toilet)	NA	Cooler	Not Detected	NO	N/A	N/A	N/A	N/A			
DRINKING	YSK1901C063-B	Corridor 2F (Near girls Toilet)	NA	Cooler	Not Detected	NO	N/A	N/A	N/A	N/A			
DRINKING	YSK1901C064-A	Corridor 2F (Near Mech room)	NA	Cooler	Not Detected	NO	N/A	N/A	N/A	N/A			
DRINKING	YSK1901C064-B	Corridor 2F (Near Mech room)	NA	Cooler	Not Detected	NO	N/A	N/A	N/A	N/A			
DRINKING	YSK1901C071-A	Info Center	NA	Cooler	Not Detected	NO	N/A	N/A	N/A	N/A			
DRINKING	YSK1901C071-B	Info Center	NA	Cooler	Not Detected	NO	N/A	N/A	N/A	N/A			
DRINKING	YSK1901C076-A	Corridor (Near girls bathroom) (3F)	NA	Cooler	Not Detected	NO	N/A	N/A	N/A	N/A			
DRINKING	YSK1901C076-B	Corridor (Near girls bathroom) (3F)	NA	Cooler	Not Detected	NO	N/A	N/A	N/A	N/A			
DRINKING	YSK1901C087-A	Corridor 3F (Near room 306 entrance)	NA	Cooler	Not Detected	NO	N/A	N/A	N/A	N/A			
DRINKING	YSK1901C087-B	Corridor 3F (Near room 306 entrance)	NA	Cooler	0.52	NO	N/A	N/A	N/A	N/A			
DRINKING	YSK1901C131-A	Corridor	NA	Cooler	Not Detected	NO	N/A	N/A	N/A	N/A			
DRINKING	YSK1901C131-B	Corridor	NA	Cooler	Not Detected	NO	N/A	N/A	N/A	N/A			
DRINKING	YSK1902C001-A	Corridor	NA	Cooler	Not Detected	NO	N/A	N/A	N/A	N/A			
DRINKING	YSK1902C001-B	Corridor	NA	Cooler	Not Detected	NO	N/A	N/A	N/A	N/A			
DRINKING	YSK1953C025	Gymnasium	417	Cooler	Not Detected	NO	N/A	N/A	N/A	N/A			
DRINKING	YSK1953C026	Gymnasium	417	Cooler	Not Detected	NO	N/A	N/A	N/A	N/A			
DRINKING	YSK1954C006-A	Reception	702	Cooler	Not Detected	NO	N/A	N/A	N/A	N/A			
DRINKING	YSK1954C006-B	Reception	702	Cooler	Not Detected	NO	N/A	N/A	N/A	N/A			
DRINKING	YSK1955C001-A	Seating	611	Cooler	Not Detected	NO	N/A	N/A	N/A	N/A			
DRINKING	YSK1955C001-B	Seating	611	Cooler	Not Detected	NO	N/A	N/A	N/A	N/A			
DRINKING	YSK1955C009-A	Storage	609	Cooler	Not Detected	NO	N/A	N/A	N/A	N/A			
DRINKING	YSK1955C009-B	Storage	609	Cooler	Not Detected	NO	N/A	N/A	N/A	N/A			
DRINKING	YSK3365C008	Corridor	202	Cooler	Not Detected	NO	N/A	N/A	N/A	N/A			
DRINKING	YSK3365C009	Corridor	202	Cooler	Not Detected	NO	N/A	N/A	N/A	N/A			
COOKING	YSK1901F111	Food Prep	101	Faucet	4.1	NO	N/A	N/A	N/A	N/A			
COOKING	YSK1901F112	Food Prep	101	Faucet	3.5	NO	N/A	N/A	N/A	N/A			
COOKING	YSK1901F113	Food Prep	101	Faucet	2.3	NO	N/A	N/A	N/A	N/A			
COOKING	YSK1901F114	Food Prep	101	Faucet	2.5	NO	N/A	N/A	N/A	N/A			
COOKING	YSK1901F115	Food Prep	101	Faucet	2.4	NO	N/A	N/A	N/A	N/A			
COOKING	YSK1901F116	Food Prep	101	Faucet	1.6	NO	N/A	N/A	N/A	N/A			
COOKING	YSK1901F117	Food Prep	101	Faucet	2.5	NO	N/A	N/A	N/A	N/A			
COOKING	YSK1901F118	Food Prep	101	Faucet	1.7	NO	N/A	N/A	N/A	N/A			
COOKING	YSK1901F119	Food Prep	101	Faucet	0.58	NO	N/A	N/A	N/A	N/A			
COOKING	YSK1901F120	Food Prep	101	Faucet	1.3	NO	N/A	N/A	N/A	N/A			
WASHING	YSK3365F018	Childcare Room	209	Faucet	2.7	NO	N/A	N/A	N/A	N/A			
WASHING	YSK3365F010	Male Bathroom	227	MSF	1.3	NO	N/A	N/A	N/A	N/A			
WASHING	YSK3365F011	Male Bathroom	227	MSF	0.71	NO	N/A	N/A	N/A	N/A			
WASHING	YSK3365F012	Male Bathroom	227	MSF	0.87	NO	N/A	N/A	N/A	N/A			
WASHING	YSK3365F014	Female Bathroom	228	MSF	2.2	NO	N/A	N/A	N/A	N/A			
WASHING	YSK3365F015	Female Bathroom	228	MSF	1.3	NO	N/A	N/A	N/A	N/A			
WASHING	YSK3365F016	Female Bathroom	228	MSF	1.7	NO	N/A	N/A	N/A	N/A			
WASHING	YSK1953F012	Toilet by Office #407	408	Faucet	0.73	NO	N/A	N/A	N/A	N/A			
WASHING	YSK1953F007	Girl's Bathroom	410	Faucet	Not Detected	NO	N/A	N/A	N/A	N/A			
WASHING	YSK1953F008	Girl's Bathroom	410	Faucet	0.79	NO	N/A	N/A	N/A	N/A			
WASHING	YSK1953F009	Girl's Bathroom	410	Faucet	Not Detected	NO	N/A	N/A	N/A	N/A			
WASHING	YSK1953F010	Girl's Bathroom	410	Faucet	0.92	NO	N/A	N/A	N/A	N/A			
WASHING	YSK1953F011	Girl's Bathroom	410	Faucet	0.87	NO	N/A	N/A	N/A	N/A			
WASHING	YSK1953F024	Toilet by Office	413	Faucet	0.94	NO	N/A	N/A	N/A	N/A			
WASHING	YSK1953F015	Boy's Bathroom	416	Faucet	0.56	NO	N/A	N/A	N/A	N/A			
WASHING	YSK1953F016	Boy's Bathroom	416	Faucet	0.54	NO	N/A	N/A	N/A	N/A			
WASHING	YSK1953F017	Boy's Bathroom	416	Faucet	Not Detected	NO	N/A	N/A	N/A	N/A			
WASHING	YSK1953F018	Boy's Bathroom	416	Faucet	0.76	NO	N/A	N/A	N/A	N/A			
WASHING	YSK1902F007	Technical Room (Music Room)	504	Faucet	15	NO	N/A	N/A	N/A	N/A			
WASHING	YSK1902F008	Technical Room (Music Room)	504	Faucet	22	YES	3/16/2023	32	1.7	Pending replacement or removal			
WASHING	YSK1955F010	Storage	609	Faucet	1.9	NO	N/A	N/A	N/A	N/A			
WASHING	YSK1955F002	Dress RM	613	Faucet	2.5	NO	N/A	N/A	N/A	N/A			

Sample Summary Results Table

Priority Areas Lead Testing and Corrective Actions (March 2023)

FLEACT Yokosuka - Kinnick High School

Buildings: 1901, 1902, 1953, 1954, 1955, 3365

SAMPLING LOCATION DESCRIPTION					INITIAL SAMPLING RESULTS			RE-SAMPLING RESULTS		CORRECTIVE ACTIONS	POST-CORRECTIVE ACTION SAMPLING RESULTS		
					Lead Screening Level of 15 ppb			Lead Screening Level of 15 ppb			Recommended Level = 15 ppb		
CATEGORY	SAMPLE ID	Room Number	Outlet Location	Outlet Description	First Draw (ppb)	Retest required?	Date Fixture Secured? (See Note 1)	First Draw (ppb)	Follow up Flush - Collected 30 seconds after First Draw Sampling (ppb)	Description	First Draw (ppb) (See note 2)	Follow up Flush - Collected 30 seconds after First Draw Sampling (ppb)	
SAMPLING DATE RESULTS DATE					3/1/2023-3/10/2023				3/25/2023	3/25/2023		mm/dd/yyyy	
					3/16/2023				3/31/2023	3/31/2023		mm/dd/yyyy	
WASHING	YSK1954F003	Break Room	712	Faucet	Not Detected	NO	N/A	N/A	N/A	N/A			
WASHING	YSK1954F001	Nurse Room	721	Faucet	3	NO	N/A	N/A	N/A	N/A			
WASHING	YSK3365F003	Male Bathroom	201A	MSF	1.2	NO	N/A	N/A	N/A	N/A			
WASHING	YSK3365F004	Female Bathroom	201B	MSF	0.9	NO	N/A	N/A	N/A	N/A			
WASHING	YSK1953F014	Handicap Bathroom (Boy)	411 (AKA B1)	Faucet	2.1	NO	N/A	N/A	N/A	N/A			
WASHING	YSK1955F003	Dressing	614A	Faucet	3.7	NO	N/A	N/A	N/A	N/A			
WASHING	YSK1901F007	Science Lab	107	Faucet	2.2	NO	N/A	N/A	N/A	N/A			
WASHING	YSK1901F008	Science Lab	107	Faucet	1.9	NO	N/A	N/A	N/A	N/A			
WASHING	YSK1901F028	Cent Supply Room	119	Faucet	Not Detected	NO	N/A	N/A	N/A	N/A			
WASHING	YSK1901F036	Boy's Toilet 1F near room M101	NA	Faucet	0.88	NO	N/A	N/A	N/A	N/A			
WASHING	YSK1901F037	Boy's Toilet 1F near room M101	NA	Faucet	Not Detected	NO	N/A	N/A	N/A	N/A			
WASHING	YSK1901F038	Boy's Toilet 1F near room M101	NA	Faucet	Not Detected	NO	N/A	N/A	N/A	N/A			
WASHING	YSK1901F039	Boy's Toilet 1F near room M101	NA	Faucet	1	NO	N/A	N/A	N/A	N/A			
WASHING	YSK1901F040	Girl's Toilet 1F near room 112	NA	Faucet	0.54	NO	N/A	N/A	N/A	N/A			
WASHING	YSK1901F041	Girl's Toilet 1F near room 112	NA	Faucet	0.67	NO	N/A	N/A	N/A	N/A			
WASHING	YSK1901F042	Girl's Toilet 1F near room 112	NA	Faucet	0.75	NO	N/A	N/A	N/A	N/A			
WASHING	YSK1901F043	Girl's Toilet 1F near room 112	NA	Faucet	0.7	NO	N/A	N/A	N/A	N/A			
WASHING	YSK1901F044	Girl's Toilet 1F near room 112	NA	Faucet	1.5	NO	N/A	N/A	N/A	N/A			
WASHING	YSK1901F045	Girl's Toilet by Cafeteria (1F)	NA	Faucet	Not Detected	NO	N/A	N/A	N/A	N/A			
WASHING	YSK1901F046	Girl's Toilet by Cafeteria (1F)	NA	Faucet	4.5	NO	N/A	N/A	N/A	N/A			
WASHING	YSK1901F047	Boy's Toilet by Cafeteria (1F)	NA	Faucet	3.6	NO	N/A	N/A	N/A	N/A			
WASHING	YSK1901F048	Boy's Toilet by Cafeteria (1F)	NA	Faucet	Not Detected	NO	N/A	N/A	N/A	N/A			
WASHING	YSK1901F052	Classroom (GPC)	207	Faucet	0.79	NO	N/A	N/A	N/A	N/A			
WASHING	YSK1901F053	Classroom (GPC)	207	Faucet	0.68	NO	N/A	N/A	N/A	N/A			
WASHING	YSK1901F054	Classroom (GPC)	208	Faucet	2.1	NO	N/A	N/A	N/A	N/A			
WASHING	YSK1901F055	Boys Toilet Near Room M202	NA	Faucet	0.74	NO	N/A	N/A	N/A	N/A			
WASHING	YSK1901F056	Boys Toilet Near Room M202	NA	Faucet	0.52	NO	N/A	N/A	N/A	N/A			
WASHING	YSK1901F057	Boys Toilet Near Room M202	NA	Faucet	Not Detected	NO	N/A	N/A	N/A	N/A			
WASHING	YSK1901F058	Boys Toilet Near Room M202	NA	Faucet	Not Detected	NO	N/A	N/A	N/A	N/A			
WASHING	YSK1901F059	Girls Toilet Near Room 214	NA	Faucet	0.67	NO	N/A	N/A	N/A	N/A			
WASHING	YSK1901F060	Girls Toilet Near Room 214	NA	Faucet	1.2	NO	N/A	N/A	N/A	N/A			
WASHING	YSK1901F061	Girls Toilet Near Room 214	NA	Faucet	0.66	NO	N/A	N/A	N/A	N/A			
WASHING	YSK1901F062	Girls Toilet Near Room 214	NA	Faucet	0.61	NO	N/A	N/A	N/A	N/A			
WASHING	YSK1901F066	Room 214 Toilet	214	Faucet	Not Detected	NO	N/A	N/A	N/A	N/A			
WASHING	YSK1901F067	Boy's Toilet Near Info Center (2F)	NA	Faucet	5.9	NO	N/A	N/A	N/A	N/A			
WASHING	YSK1901F068	Boy's Toilet Near Info Center (2F)	NA	Faucet	0.74	NO	N/A	N/A	N/A	N/A			
WASHING	YSK1901F069	Girl's Toilet Near Info Center (2F)	NA	Faucet	6.4	NO	N/A	N/A	N/A	N/A			
WASHING	YSK1901F070	Girl's Toilet Near Info Center (2F)	NA	Faucet	1.2	NO	N/A	N/A	N/A	N/A			
WASHING	YSK1901F072	Custodial	301	Faucet	0.57	NO	N/A	N/A	N/A	N/A			
WASHING	YSK1901F073	Toilet in Break room	319	Faucet	1.4	NO	N/A	N/A	N/A	N/A			
WASHING	YSK1901F074	Toilet in Break room	319	Faucet	0.54	NO	N/A	N/A	N/A	N/A			
WASHING	YSK1901F075	Break room	319	Faucet	1	NO	N/A	N/A	N/A	N/A			
WASHING	YSK1901F077	Boy's Toilet near M302	NA	Faucet	Not Detected	NO	N/A	N/A	N/A	N/A			
WASHING	YSK1901F078	Boy's Toilet near M302	NA	Faucet	0.67	NO	N/A	N/A	N/A	N/A			
WASHING	YSK1901F079	Boy's Toilet near M302	NA	Faucet	0.65	NO	N/A	N/A	N/A	N/A			
WASHING	YSK1901F080	Boy's Toilet near M302	NA	Faucet	0.7	NO	N/A	N/A	N/A	N/A			
WASHING	YSK1901F081	Girl's Toilet near 301	NA	Faucet	Not Detected	NO	N/A	N/A	N/A	N/A			
WASHING	YSK1901F082	Girl's Toilet near 301	NA	Faucet	Not Detected	NO	N/A	N/A	N/A	N/A			
WASHING	YSK1901F083	Girl's Toilet near 301	NA	Faucet	Not Detected	NO	N/A	N/A	N/A	N/A			
WASHING	YSK1901F084	Girl's Toilet near 301	NA	Faucet	0.57	NO	N/A	N/A	N/A	N/A			
WASHING	YSK1901F085	Girl's Toilet near 301	NA	Faucet	1.6	NO	N/A	N/A	N/A	N/A			
WASHING	YSK1901F088	Boy's Toilet near Balcony	NA	Faucet	4	NO	N/A	N/A	N/A	N/A			
WASHING	YSK1901F121	Art Room	105	Faucet	Not Detected	NO	N/A	N/A	N/A	N/A			
WASHING	YSK1901F122	Art Room	105	Faucet	0.74	NO	N/A	N/A	N/A	N/A			
WASHING	YSK1901F123	Art Room	105	Faucet	0.53	NO	N/A	N/A	N/A	N/A			
WASHING	YSK1901F124	Art Room	105	Faucet	0.73	NO	N/A	N/A	N/A	N/A			
WASHING	YSK1901F125	Teacher's room	104	Faucet	Not Detected	NO	N/A	N/A	N/A	N/A			
WASHING	YSK1901F126	Host Nation	112	Faucet	0.88	NO	N/A	N/A	N/A	N/A			
WASHING	YSK1901F126	Room112 Toilet (Teacher work room)	112	Faucet	1.9	NO	N/A	N/A	N/A	N/A			
WASHING	YSK1901F127	Girls Bathroom near Balcony (3F)	NA	Faucet	3.1	NO	N/A	N/A	N/A	N/A			
WASHING	YSK1901F129	Info Center	212	Faucet	3.6	NO	N/A	N/A	N/A	N/A			
WASHING	YSK1901F132	Girls Toilet near Room 214	NA	Faucet	1.8	NO	N/A	N/A	N/A	N/A			
WASHING	YSK1901F136	Bathroom near 122C	NA	Faucet	Not Detected	NO	N/A	N/A	N/A	N/A			

Sample Summary Results Table

Priority Areas Lead Testing and Corrective Actions (March 2023)

FLEACT Yokosuka - Kinnick High School

Buildings: 1901, 1902, 1953, 1954, 1955, 3365

SAMPLING LOCATION DESCRIPTION					INITIAL SAMPLING RESULTS			RE-SAMPLING RESULTS		CORRECTIVE ACTIONS	POST-CORRECTIVE ACTION SAMPLING RESULTS	
					Lead Screening Level of 15 ppb			Lead Screening Level of 15 ppb			Recommended Level = 15 ppb	
CATEGORY	SAMPLE ID	Room Number	Outlet Location	Outlet Description	First Draw (ppb)	Retest required?	Date Fixture Secured? (See Note 1)	First Draw (ppb)	Follow up Flush - Collected 30 seconds after First Draw Sampling (ppb)	Description	First Draw (ppb) (See note 2)	Follow up Flush - Collected 30 seconds after First Draw Sampling (ppb)
SAMPLING DATE RESULTS DATE					3/1/2023-3/10/2023			3/25/2023	3/25/2023		mm/dd/yyyy	
					3/16/2023			3/31/2023	3/31/2023		mm/dd/yyyy	
WASHING	YSK1901F143	Teacher Room Bathroom	104	MSF	1.4	NO	N/A	N/A	N/A	N/A		
WASHING	YSK1902F003	Girl's Bathroom	NA	Faucet	11	NO	N/A	N/A	N/A	N/A		
WASHING	YSK1902F004	Girl's Bathroom	NA	Faucet	3.9	NO	N/A	N/A	N/A	N/A		
WASHING	YSK1902F005	Boy's Bathroom	NA	Faucet	6.6	NO	N/A	N/A	N/A	N/A		
WASHING	YSK1902F006	Boy's Bathroom	NA	Faucet	2.7	NO	N/A	N/A	N/A	N/A		
WASHING	YSK1954F002	Toilet by Nurse RM #721	NA	Faucet	2.9	NO	N/A	N/A	N/A	N/A		
WASHING	YSK1954F004	Toilet (Men)	NA	Faucet	4.2	NO	N/A	N/A	N/A	N/A		
WASHING	YSK1954F005	Toilet (Women)	NA	Faucet	0.51	NO	N/A	N/A	N/A	N/A		
WASHING	YSK1955F005	Boy's Bathroom	NA	Faucet	0.69	NO	N/A	N/A	N/A	N/A		
WASHING	YSK1955F006	Boy's Bathroom	NA	Faucet	0.65	NO	N/A	N/A	N/A	N/A		
WASHING	YSK1955F007	Girl's Bathroom	NA	Faucet	0.6	NO	N/A	N/A	N/A	N/A		
WASHING	YSK1955F008	Girl's Bathroom	NA	Faucet	Not Detected	NO	N/A	N/A	N/A	N/A		

Notes:
¹ Affected outlets were immediately secured after receiving communication from the lab on results exceeding the recommended level of 15 ppb.

Table 2. Summary Statistics

CATEGORY	INITIAL SAMPLING RESULTS	RE-SAMPLING RESULTS			POST-CORRECTIVE ACTION RESULTS
	Lead Screening Level of 15 ppb				
	First Draw (ppb)	Water Fountain	First Draw (ppb)	Follow up Flush	First Draw (ppb)
Total Drinking	30	0	0	0	0
Total Drinking > 15 ppb	0	0	0	0	0
Total Cook	10	0	0	0	0
Total Cook> 15 ppb	0	0	0	0	0
Total Washing	97	0	1	0	0
Total Washing > 15 ppb	1	0	1	0	0
Total Samples	137	0	1	0	0
Total Samples > 15 ppb	1	0	1	0	0

Floor Plan - Kinnick High School

Bldg. 1901, 1902, 1953, 1954, 1955, 3365

F = Faucet

C = Cooler water fountain

B = Bubbler water fountain

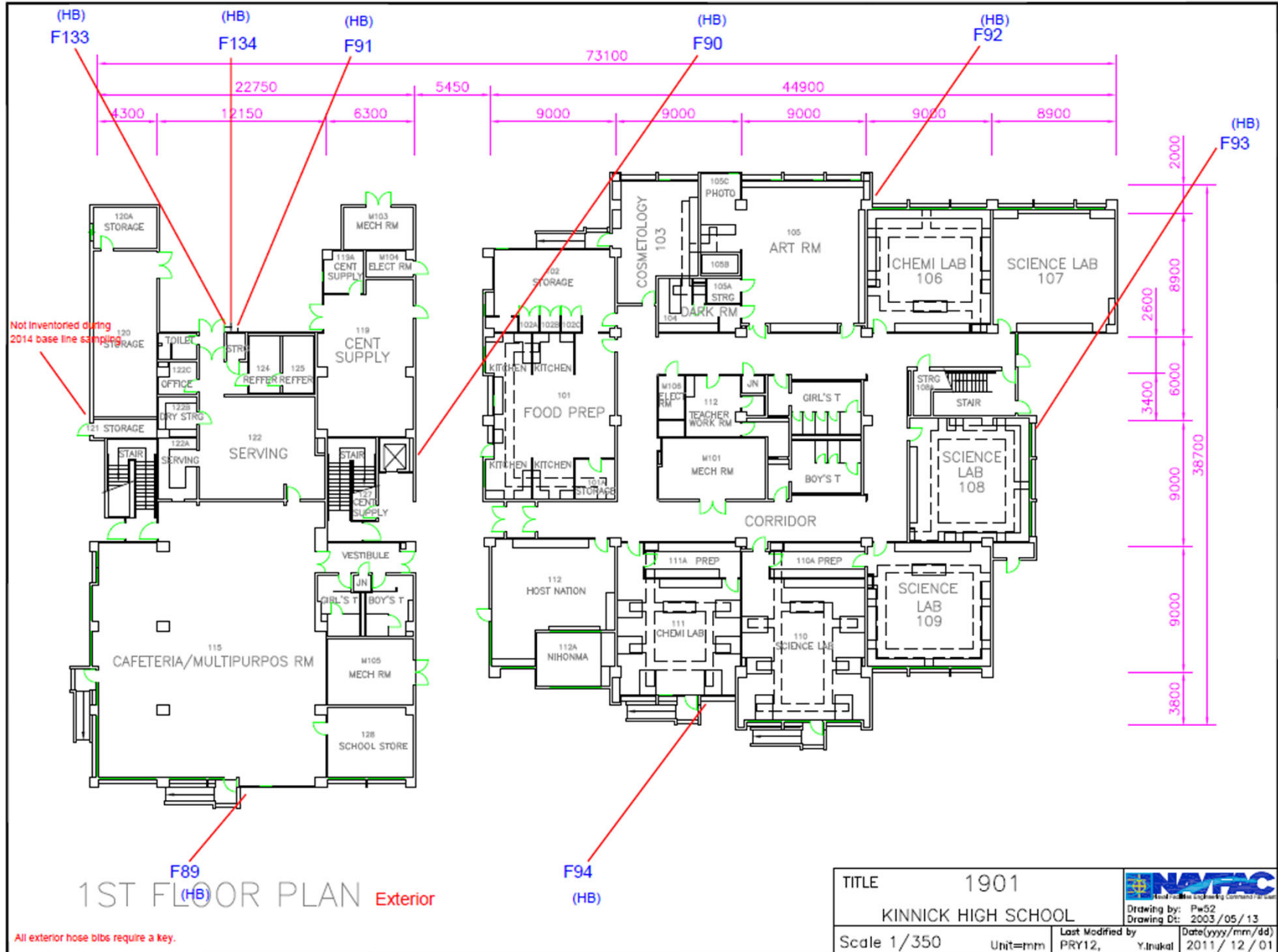
No Sampling at the following:

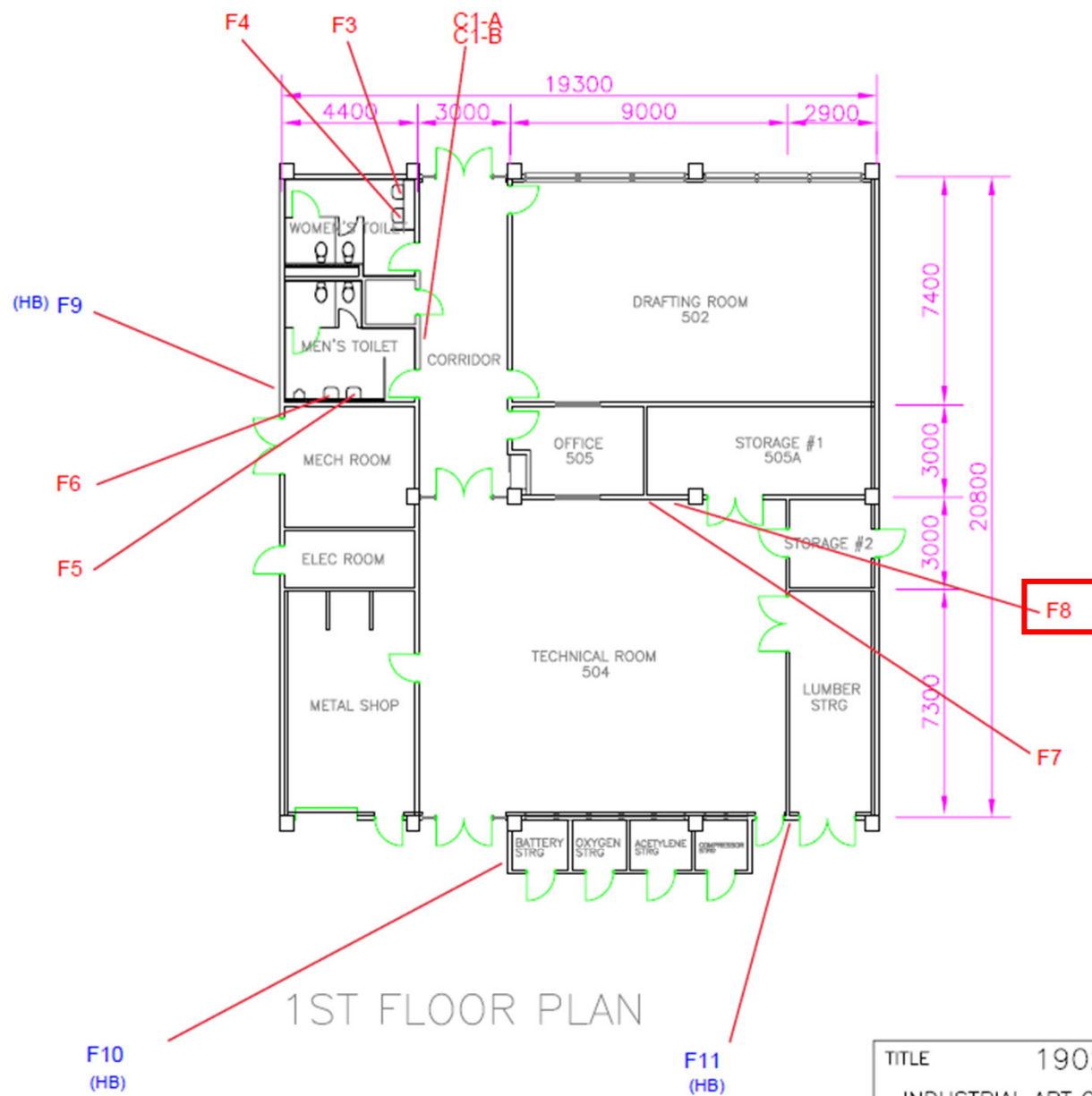
S = Shower

J = Janitor sink

HB = Hose Bibb

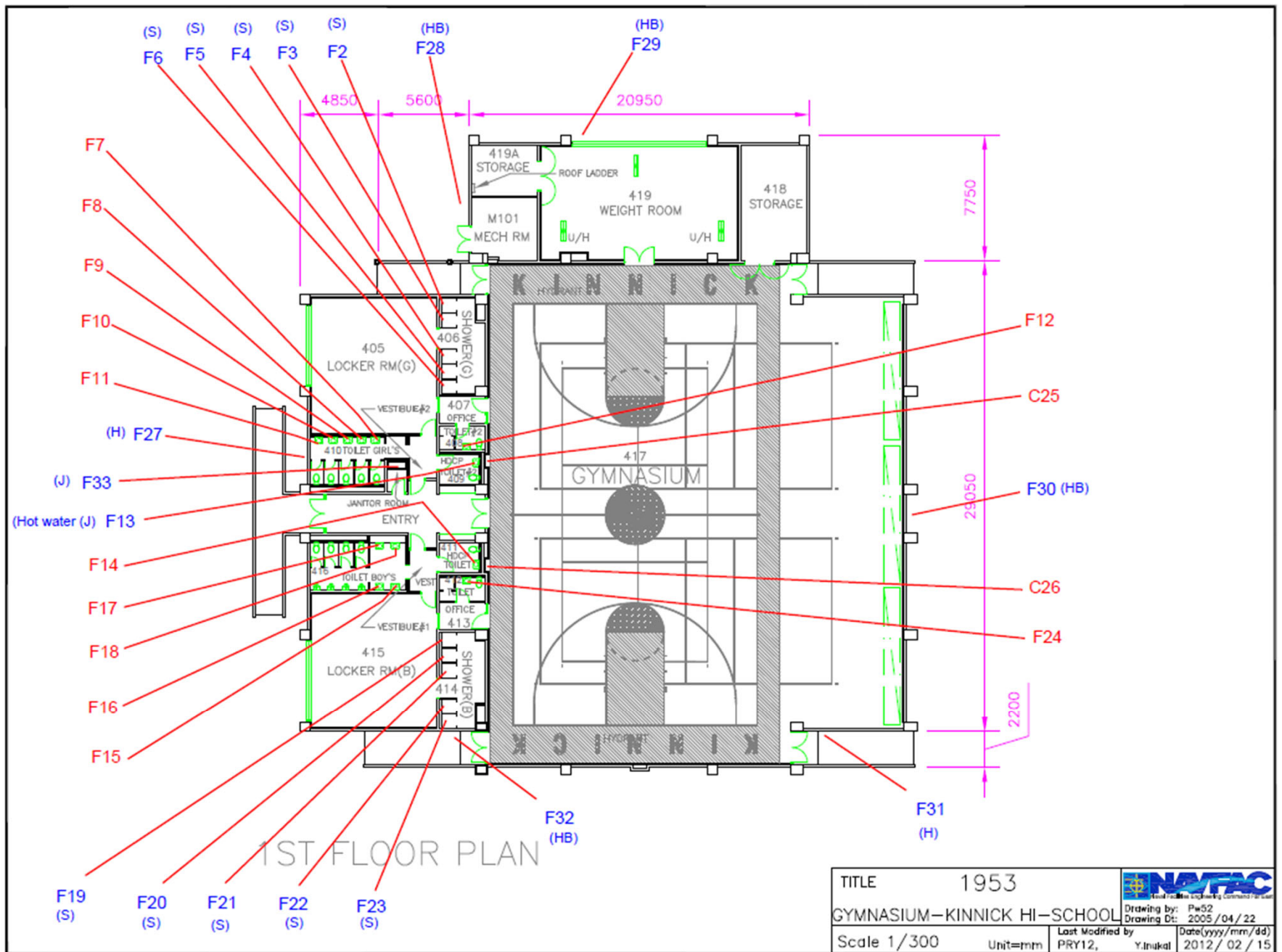
L = Lab Sink

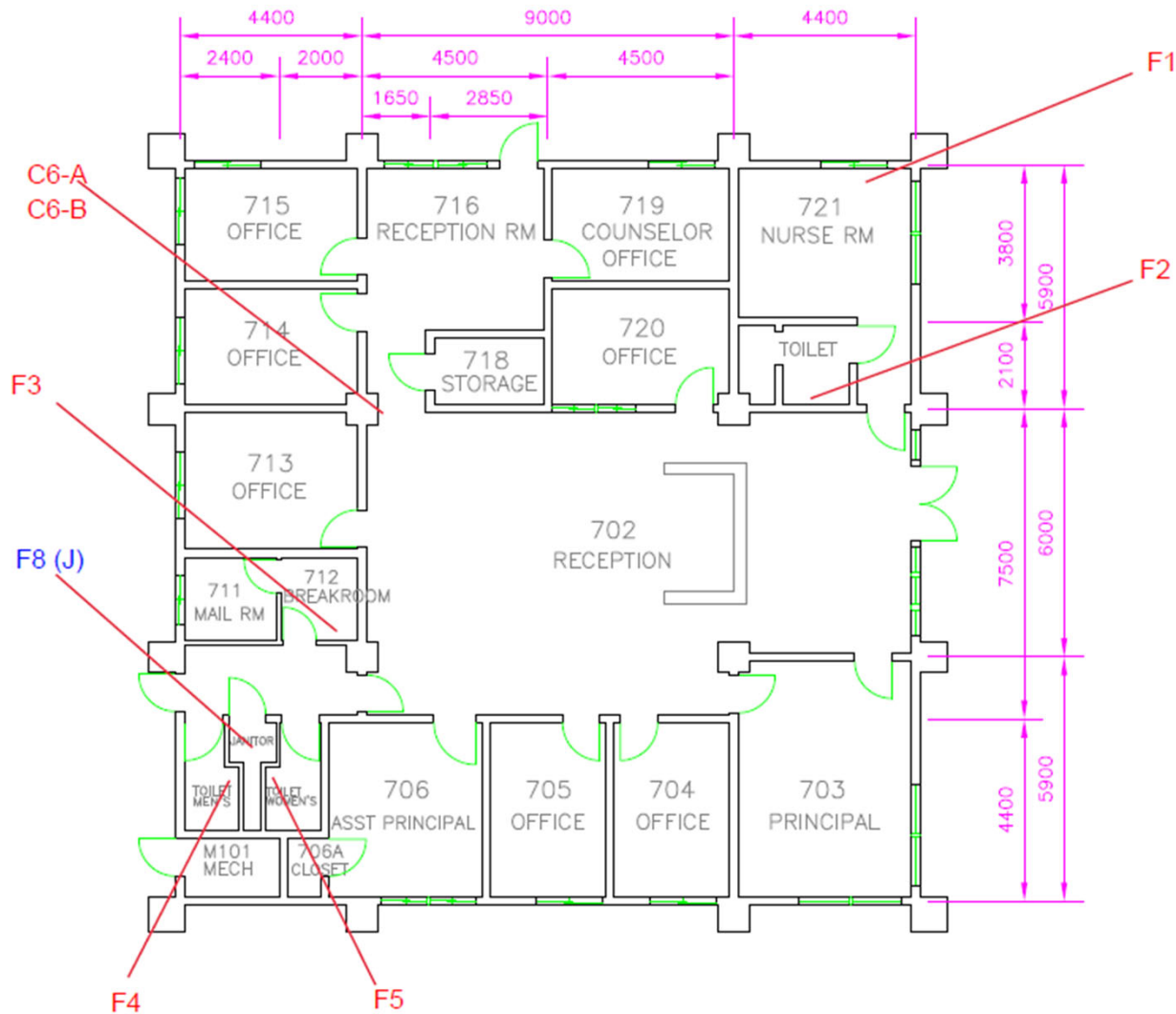




Combination lock key required for building access

TITLE 1902		 Northwest Air Conditioning Contractors Association	
INDUSTRIAL ART CLASSROOM		Drawing by: Pw52 Drawing Dt: 1998 / 07 / 29	
Scale 1/200	Unit=mm	Last Modified by PRY12, inukely	Date(yyyy/mm/dd) 2008 / 02 / 13





1ST FLOOR PLAN

TITLE 1954		INTEC	
KINNICK HIGH SCHOOL OFFICE		Drawing by: Pw52 Drawing Dt: 1998/07/29	
Scale 1/150	Unit=mm	Last Modified by PRY12, Y.Inakat	Date(yyyy/mm/dd) 2011/12/06

